

abode

COMPLIMENTARY COPY

JULY/AUGUST 2018

*cream of
the crop*

AWARD-WINNING ARCHITECTURE EXAMINED

GOING GREEN

Why we're potty
about plants

BEST DRESSED

A captivating contemporary
renovation

TURNING JAPANESE

Wabi-sabi style
explored

THE NATURAL HOME OF MARBLE AND GRANITE.

Calatarao is a distinctive, fine-grained limestone which has been hewn from the world-famous quarries of Zaragoza, Spain, for over 2000 years.

An ancient stone with a rich history Neolith has faithfully captured Calatarao's lustrous golden veining and intensely dark grey colour which characterises the stone.

cdk

CDK STONE

cdkstone.co.nz

40 ACHERON DRIVE,
RICCARTON, CHRISTCHURCH
0508 4 TILES (484537)



Kitchen from Doca. Salone del Mobile - EuroCucina, Milán 2018



NEOLITH
EXTRAORDINARY SURFACES

BENCHTOP IN NEOLITH CALATORAO



ARMSTRONG
INTERIORS

INTERIOR ARCHITECTURE
KITCHEN & BATHROOM DESIGN
INTERIOR SOFT FURNISHINGS
FURNITURE & STORAGE DESIGN
HOME STAGING
CAD & PHOTOSHOP SERVICES

03 356 2636
office@armstronginteriors.co.nz
armstronginteriors.co.nz

FINALIST
NZ House & Garden Interior of the Year Competition

As I make the transition from a life-time of transient urban living to a permanent rural idyll, the nesting urge is stronger than ever. Trading in the excitement of the city for a slower pace of life, where my closest neighbours are of the four-legged woolly variety, I find myself re-examining how my home plays a pivotal role in how I live my life.

Working from home and getting the most out of a small space remains a priority as I make the move from an inner-city apartment to a tiny home in the countryside. In this issue we consider the importance of striking the balance between work and play (page 26), and our architectural expert helps us to think outside the square to maximise the functionality of underutilised spaces (page 80).

As winter hits, the desire to retreat indoors and hibernate leads us to look at ways to create a cosy home. We explore the therapeutic benefits of spas (page 18) and we introduce the latest bathroom furniture collections guaranteed to imbue any bathroom with timeless luxury (page 24). We also examine the benefits of central heating in terms of whole-home comfort, economy and efficiency (page 22) and the ambience gas fires can offer (page 14).

Award-winning design is celebrated in our top picks from the recent 2018 Canterbury Architecture Awards (page 28), and we bring you a diverse line-up of beautiful new builds and striking renovations from Canterbury and overseas.

Whatever your style, we're sure this issue has plenty to inspire you to live a life that reflects who you are and what you love.



Majka

Majka Kaiser
EDITOR
majka@27publishers.co.nz

[abodemagazine.co.nz](mailto:majka@27publishers.co.nz)

[facebook.com/abodemagazineNZ](https://www.facebook.com/abodemagazineNZ)

PUBLISHER
Twenty Seven Publishers Ltd
lisa@27publishers.co.nz
021 782 228

EDITOR
Majka Kaiser
majka@27publishers.co.nz
027 500 1947

SUB EDITOR
Kate Barber
kate@27publishers.co.nz
027 257 8487

DESIGN & PRODUCTION
Meagan Harbott
meagan@27publishers.co.nz
027 234 3430

ADVERTISING
Rebecca Duncan
rebecca@27publishers.co.nz
021 711 813

CONTRIBUTORS
Clinton Lloyd Photography, David Straight, Davina Witcher, Frobisher Interiors, Greg Young, Hazel Redmond, Jamie Armstrong, Krista Coupland, Melanda Slemint, Mick Stephenson, Mike Pero, Olivia Skene Design, Paul Wheeler, SNAP! Photography, Stephen Goodenough, Sven Alberding, Tony Milne, Vicki Sleet, Warren Heath

PRINT
Blueprint, Christchurch



Bathroom furniture has
never looked so good

st.michel
BATHROOMWARE

OAKLEYS
bathroom centre | plumbing supplies



Delivering a perfect blend of modern and traditional elements, the all-new London Bathroom Furniture Collection from St Michel offers superior function, luxury and elegance. Call in to our showroom and see our staff about this exciting new range.

CHRISTCHURCH 305 Cashel St, Ph 03 379 4750

www.oakleysplumbing.co.nz

DUNEDIN 46 Timaru St, Ph 03 466 3600

28

CREAM OF THE CROP

Our picks from the 2018 Canterbury Architecture Awards



HOMES

- 34 DEFINING DETAIL**
An impressive barn-style family home hits the mark
- 42 PITCH PERFECT**
A thoughtful family home departs from convention
- 50 BEST DRESSED**
A captivating contemporary renovation
- 58 PAINTED LADY**
A derelict country home in Cape Town receives a dramatic makeover



CONTENTS

FEATURES

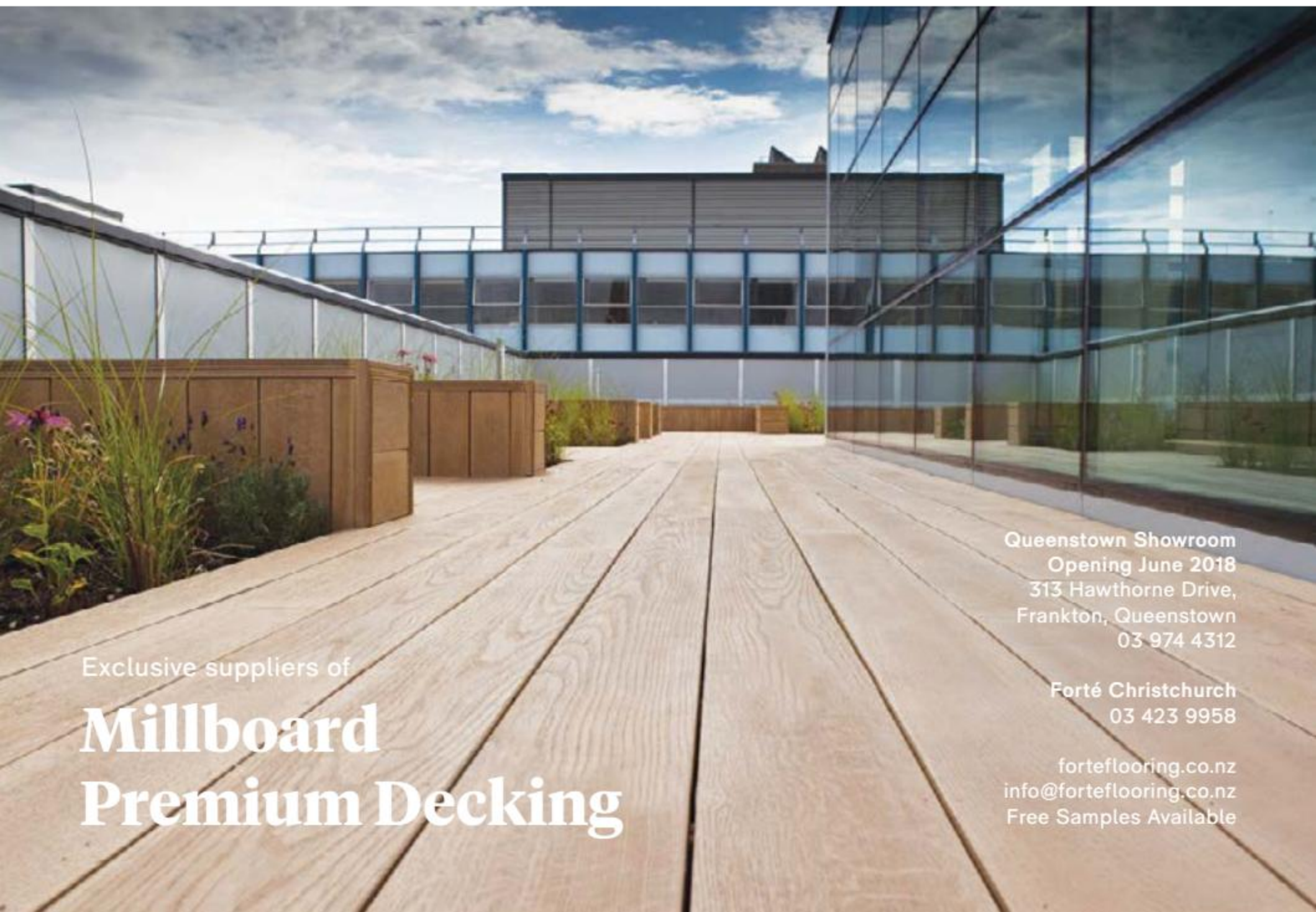
- 14 WARM AS TOAST**
Keep cosy this winter with smart hot water heating & gas fires
- 16 YOUR DREAM HOME SORTED**
Expert guidance to simplify the building process
- 18 LUXURY SPA THERAPY**
The royal relaxation treatment at home
- 20 AWARD-WINNING FLAIR**
Achieve design success with expert guidance
- 22 THE HEAT IS ON**
Benefits of central heating
- 24 INNOVATION ON TAP**
An inspired collection of elegant bathroom furniture
- 26 WORK & PLAY**
Creating dual functions for different spaces
- 65 A GOOD FIT**
Designing the ultimate setting for lingerie & swimwear





forté
— Nature Refined

The Timber Flooring Specialists



Exclusive suppliers of

Millboard Premium Decking

Queenstown Showroom
Opening June 2018
313 Hawthorne Drive,
Frankton, Queenstown
03 974 4312

Forté Christchurch
03 423 9958

forteflooring.co.nz
info@forteflooring.co.nz
Free Samples Available



COLUMNS

- 8 INTERIOR TRENDS**
Inspired finds for your home
- 12 TURNING JAPANESE**
Exploring wabi-sabi style
- 71 PLACES WE LOVE**
The ideal mini-break:
Omapere, Northland
- 80 LAST WORD**
The spare room: considered design
for multi-functional spaces

LIFESTYLE

- 67 GOING GREEN**
Our predilection for bringing
greenery indoors
- 69 MOTORING**
A powerful performance: the
newest Mercedes Benz SUV
- 70 PASSION FOR PRINT**
Refresh interiors with colour
and pattern
- 72 ROASTED RATATOUILLE**
A classic dish revisited
- 73 FONDUE PARTY**
All you need to host an intimate
winter gathering
- 74 THE GOOD LIFE**
Best in books, beauty, couture
& cuisine

REGULARS

- 4 EDITOR'S NOTE**
- 76 SHOP WINDOW & DIRECTORY**



ON THE COVER

A stunning barn-style new build by Switched On Building Solutions combines clever design with immaculate craftsmanship, on page 34.
Photography: SNAP! Photography



Your cosy green oasis starts with Osaka, the elegant sofa designed for small spaces. We covered it in Napoli: our luxe corduroy velvet, delivered here in Forest Green. While brass legs add the perfect finishing touch. Available in all sizes and over 100 fabric and leather options.

MAKE THE MOST OUT OF YOUR SPACE | BOCONCEPT.COM
Auckland | Wellington | Christchurch

BoConcept®

INSPIRING FINDS

Furniture, fittings and finishing touches for your home



luxury's lap

PLAYING OUT IN A VARIETY OF TEXTURES, FINISHES AND MATERIALS, QUALITY IS THE BOTTOM LINE WHEN INJECTING A TOUCH OF LUXURY TO THE EVERYDAY.

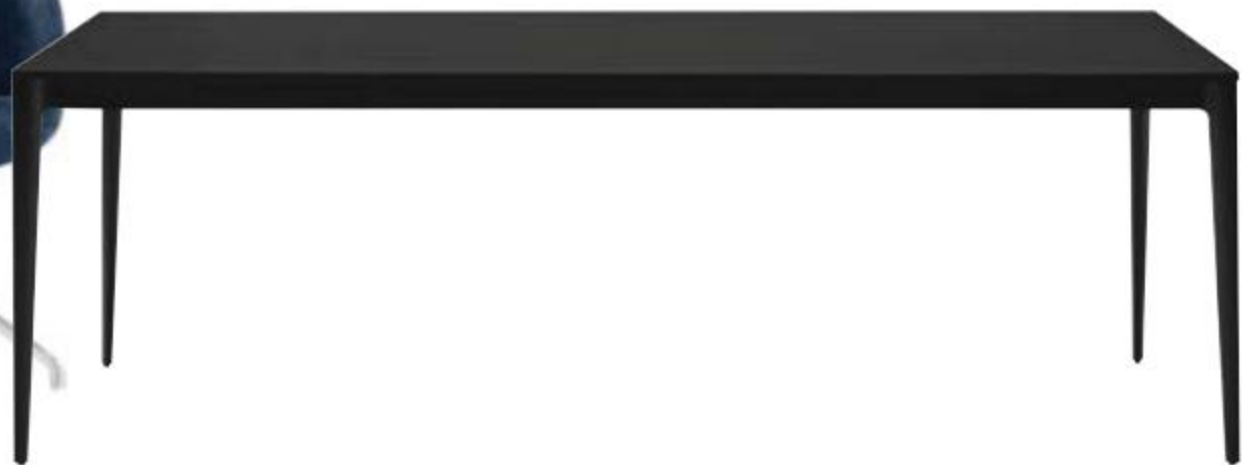


CLOCKWISE FROM LEFT Porcelanosa Wall Tiles nextdore.co.nz; Rose Gold Salad Servers marblebasics.com.au; Resene Oilskin, Resene Beaten Track and Resene Cloud resene.co.nz; Sheridan Canfield Bedcover ballantynes.co.nz; Menu Échasse Bowl corsomerivale.nz; Hydrangea Studs by Kath Inglis thenational.co.nz; Fusion Chair boconcept.co.nz.



an organised life

THE HOME OFFICE IS A PLACE WHERE CREATIVITY AND PRODUCTIVITY GO HAND IN HAND. STRIKING THE RIGHT BALANCE BETWEEN ORDER AND FLEXIBILITY IS KEY.



CLOCKWISE FROM LEFT Menu Kettle Teapot corsomerivale.nz; Frankie Triple Pendant by Designtree thecleverdesignstore.com; Sunny Town Fine Art Print by Julian Godfrey thecleverdesignstore.com; Torino Conference Table & Adelaide Swivel Chair boconcept.co.nz; Yamazaki Tosca Tool Box paperplanestore.com.



Come and see our beautiful new store at
THE TANNERY

Shop 43, The Tannery
3 Garlands Road,
Woolston, Christchurch
03 365 0172

fabrichouse.co.nz

hibernation hub

CREATE A COSY NOOK FOR DIVING INTO A GOOD BOOK, INDULGING IN HOME-MADE BAKING OR SNUGLING UP WITH YOUR LOVED ONE THIS WINTER.



CLOCKWISE FROM LEFT Como Bookcase boconcept.co.nz; Carrie Norm Black Lantern corsomerivale.nz; Citta Design Harvest Planters paperplanestore.com; You're Welcome Pinch Cushion yourewelcomedesign.com; Alirio Art Print by Noline Augusta Milton paperplanestore.com; Arno Sofa dalewis.co.nz; Bake Cake Plate & Server ballantynes.co.nz.

Instaglam



blending beautiful furniture,
with stunning accessories,
creating inspirational styles.

 **LEWIS**
furniture



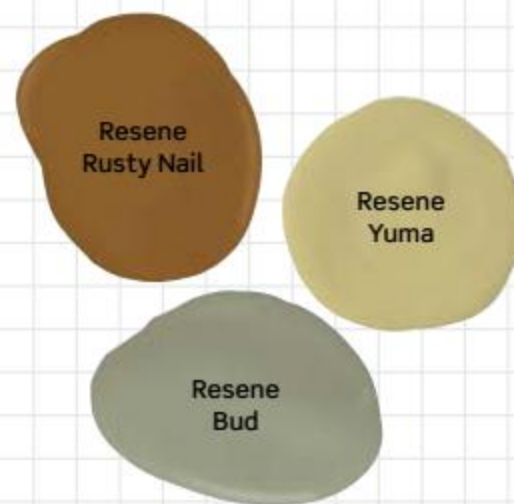
COLOUR PALETTE



The colour palette tends towards natural, neutral tones influenced by the coast and bush. Think soft greens, warm greys and earthy browns.

Applying these hues in true wabi-sabi style is made easy with the Resene palette cards. Instead of using a single palette card that offers a uniform tonal look, skip to the next card with similar palette, which uses a different composition. To achieve a harmonious green scheme, for example, try partnering Resene palette cards R30 (grey-greens) and R31 (soft greens) with R32 (yellowish greens). This approach can also be applied to the Resene Whites and Neutrals ranges.

Whatever your personal style, give yourself permission to let go and relax, the wabi-sabi way.



TOP PHOTO Background - Resene Cargo; Bowl - Resene Yuma; Basket - Resene Rusty Nail; A4 swatches (clockwise from left to right) are Resene Siam, Resene Scrub and Resene Bud.

Turning Japanese

EMBRACE THE NATURALLY IMPERFECT WORLD WE LIVE IN BY CREATING A RELAXING, LIVED-IN LOOK AT HOME.

To understand the latest philosophies behind global decorating, it's time to start speaking a different language. First there was 'hygge' and now there is 'wabi-sabi'. While the Danish word 'hygge' refers to the cosy feeling created by the careful arrangement of interior elements, the Japanese term 'wabi-sabi' is based on the philosophy that there is beauty to be found in imperfection.

Wabi-sabi rebels against the homogeneity of the mass-produced and invites us to celebrate the beauty of the handcrafted. As the artisan lovingly creates each piece by hand, the imperfections cast by the human hand are what speak to our very humanity – true to the wabi-sabi philosophy.

Translating this philosophy into our homes is all about taking a more relaxed approach. Consider using handmade pieces, asymmetrical furniture placement, natural and raw materials, and surfaces with an aged patina.

PAINT EFFECTS

An easy and effective way to create this aged look on walls and furniture, paint effects are easy, and, in keeping with the wabi-sabi philosophy, the application needn't be perfect.

Discover a world of possibilities with the Resene FX range that creates antique crackle effects, and two timber finishes, Resene Colorwood Whitewash and Resene Colorwood Greywash, that give a weathered look to floors and furniture.

resene.co.nz/colorshops



pioneer
pool & building

pioneerpools.co.nz



We are specialists in custom-made shotcrete pools & spas.

Partnering with the industry's leading names, we now also offer stainless steel pools from renowned Austrian manufacturer Berndorf.

03 348 4593 | info@pioneerpools.co.nz
4/31 Stevens Street, Waltham, Christchurch 8011



Warm as toast

KEEP COSY THIS WINTER WITH A RANGE OF HEATING PRODUCTS FROM EDWARD GIBBON.

An excellent way to create a cosy atmosphere and generate heat to fill the home is with a gas fire. A fantastic focal point for any living room, where you can curl up with a good book and a mug of hot chocolate or a glass of mulled wine, Rinnai gas fires create instant heat at the touch of a button.

Eliminating the arduous tasks of collecting, cutting and stacking firewood, a gas fire also means there's no need to clean out ash and soot.

Rinnai gas fires offer a sleek, contemporary exterior design with a choice of frame colours, sizes and media options, and can be in-built or freestanding to suit the style of your home. Designed and made in New Zealand for New Zealand weather conditions, Rinnai gas fires have the capacity to heat large areas of up to 125 square metres (with the Rinnai Evolve model), and to transfer heat to other rooms in the home via heating ducts.

What's more, you can see how any one of the Rinnai gas fire models will look in your home with the 'Rinnai Magic' app.



edwardgibbon.co.nz | rinnai.co.nz

SMART HOT WATER HEATING



The way that a traditional electric hot water cylinder works means that you pay to heat all of the water in your cylinder 24 hours a day, 7 days a week, 52 weeks a year – whether you use it or not.

With a revolutionary smart thermostat that monitors the pattern of hot water usage in your home, you only pay for what you use, saving up to 10 per cent on water heating costs. Select one of three smart modes on the Rinnai Smart Cylinder LCD control pad: IQ mode (smart learning mode), manual mode or vacation mode. That way, no matter how you live, you'll never again pay for hot water you don't use.



DISCOVER THE VERY FINEST
IN CARPET



CAVALIER
BREMWORTH

nextdore

102 MONTREAL STREET, CHRISTCHURCH

TELEPHONE 03 366 9400

www.nextdore.co.nz

Your dream home sorted



WITHIN WEEKS OF ESTABLISHING THEIR NEW COMPANY, MY BUILD SORTED HAS RECEIVED A WAVE OF POSITIVE FEEDBACK FROM INDUSTRY PROFESSIONALS AND HAPPY HOMEOWNERS ALIKE, WHICH CONTINUES TO BUILD MOMENTUM.

A company that helps people navigate the often daunting building process, My Build Sorted offers expert advice that's impartial, transparent and completely free to the homeowner.

When building and design industry experts, Scott Harris and Vincent Sanders saw their clients getting an 'unfair deal', paying above the odds for their new builds, they were compelled to be the change in the market.

Having facilitated \$170 million worth of new build sales in Canterbury over the last 10 years, from affordable first homes to high-spec architectural homes and multi-residential complexes, when it comes to building, Scott has his finger on the pulse.

With 15 years' architectural and design experience, both locally and overseas, in commercial and residential, Vincent has a clear understanding of what is required to deliver quality design that doesn't cost the earth.

A 'building company that doesn't build', but rather assists people through the often confusing building process, My Build Sorted is a consultancy practice built on the combined wealth of industry experience that co-directors Scott and Vincent bring to the table.

Forming an exceptional partnership that clients can depend on, the pair say they

are there 'every step of the way holding their hands'. From the initial planning phase, right through the design and build, My Build Sorted has all bases covered so homeowners can enjoy the journey, and save themselves precious time and money.

'We've seen too many people pay over the odds when it comes to building', Scott says. My Build Sorted now offers a solution that costs homeowners nothing, and that can potentially 'save them thousands'.

Getting a quality result at a fair price for their clients is what drives the pair and makes their new venture so rewarding, they say.

'Building a home is such a personal endeavour, and we know how important it is to get it just right', Scott says. By partnering their clients with the best architect, designer, builder, tradespeople and suppliers, they offer them the assurance that their vision will be brought to life, with the highest quality workmanship at the best price possible.

For an impartial, transparent and completely free consultancy service in planning, design and build, My Build Sorted gives homeowners the confidence they need – from the very start to the very end.

0800 BEST PRICE | mybuildsorted.co.nz



Scott Harris and Vincent Sanders, directors of My Build Sorted.

MY BUILD SORTED STEP-BY-STEP GUIDE

To keep things simple, My Build Sorted has broken the process down into three stages.

1

PLANNING

Introduction
Site Assessment
Build Value
Timeline

2

DESIGN

Designer Introduction
Create Specification
Price Check the Design
Finalise the Design
PIM Application

3

BUILD

Select Builders
Compare Quotes
Builder Introductions
Contract Signing
Construction Visits
Post Construction Inspection
Handover
After-care

Discover how you can design and build your home, while saving tens of thousands, with the experts at My Build Sorted.



Be in to win, 10 for 10

Stage 10 sites have been released and we are celebrating by giving away 10 prizes.

Homes by **maxim**

VERSATILE
HOMES & BUILDINGS

FRAEMOHS
HOMES

mikegreerhomes

Online
design
& build

Homes by
PARKLANE

orange homes

To enter the draw to win one of our great prizes, including an iPhone X, just visit the Flemington office or one of our showhomes, collect an entry form and enter the code on our website.

Showhome Village open Wednesday to Sunday, 11am-4pm.

First National Real Estate

Joe Mullins
027 438 9996

first national
REAL ESTATE

Visit Us Onsite

Corner of Birches Road and Craig Thompson Drive, Lincoln.

www.flemington.co.nz/win



WRIGHT HOTSPRING SPAS

- + Designed to withstand the toughest frosts, with full insulation.
- + ACE Salt Water Sanitizing System promotes pure, soft water, using fewer chemicals and with no nasty chlorinated smell.
- + Unlike other models on the market, Wright HotSpring Spas' Highlife and NXT models have 100% filtration.
- + Advanced features include 1.5kW heaters and 38W circulation pumps, which are significantly more affordable to run than other brands.
- + Endless Pools offer an all-round fitness experience for swimming and resistance training – ideal for small outdoor areas.
- + River current technology offers a natural river flow with 54 speed levels.
- + All American-made products.

Luxury spa therapy

FOR OPTIMAL WELLBEING, A SPA POOL IS A GREAT WAY TO REDUCE STRESS, SOOTHE ACHY MUSCLES AND ACCELERATE HEALING.

With dusk descending earlier and temperatures taking a nose dive, tropical island holidays are particularly popular this time of year. Just as the warmth of the sun relaxes us, so too does a spa pool. And, for the price of a two-week island holiday, a spa pool can transport you to your own tropical paradise every night.

Research shows that the benefits of spa pool massage therapy are many, with new discoveries year after year. Of the therapeutic benefits, it has been found that spa pools can help lower blood pressure, give relief from pain and fatigue, and support faster tissue repair.

As modern life becomes more and more busy, spa therapy is an ideal method for keeping skyrocketing stress levels in check. And, if you're one of the thousands of New Zealanders who have trouble sleeping, a soak in the spa will raise your body temperature, which slows your heart rate, which helps support a good night's sleep.

Ideal for post-workout relaxation and muscle repair, spa pools ease the pain and even accelerate the natural healing process. The increased blood flow carries lactic acid away from the muscles faster, easing fatigue. As tense muscles relax, pressure releases on the surrounding nerves and blood vessels, aiding pain relief.

Warm water hydrotherapy stimulates

the release of endorphins, the body's natural pain killer. But, pain reduction is only part of the healing process. Ultimately, blood flow is what brings nutrients to damaged cells and completes the healing, which spas can help with as well. When the body is immersed in warm water, blood vessels nearest the skin relax, allowing more blood to flow.

And, for those suffering from lower back pain and arthritis, spas can offer both short and long term relief. For many years Europeans have used spa therapy

as an alternative treatment for various chronic diseases, reducing the use of analgesics and anti-inflammatory drugs.

Soak up the health benefits with New Zealand's premier Wright HotSpring Spas. Check out the extensive selection at 20 Carmen Road in Hornby.

0800 80 1004 | wrightspapools.co.nz



Go with the Flow



RHEEM CONTINUOUS FLOW GAS HOT WATER

Hot water, for the whole family

NEW LOOK. NEW FEATURES. New Zealand's favourite hot water brand has created a new standard in its gas continuous flow range of water heaters. With a sleek new design and modern colour, the new 16L, 20L and 24L models come with added performance and installation features.

AVAILABLE AT

www.edwardgibbon.co.nz

EDWARD GIBBON

PLUMBING, DRAINAGE & BATHROOM SUPPLIES



BALCLUTHA 2 Renfrew St 03 418 2973	BLenheim 25 Main St 03 578 3652	CHRISTCHURCH 293 Cranford St 03 366 7137	CHRISTCHURCH 75 Kingsley St 03 366 7199	DUNEDIN 249 Hillside Rd 03 455 4076	HAMILTON 32 King St 07 847 8409	INVERCARGILL 3 Bond Place 03 214 0700	NAPIER 79 Austin St 06 843 0100	NELSON 23 McGlashen Ave 03 544 4006	QUEENSTOWN 206 Glenda Dr 03 451 0390	WANAKA 23 Reece Cres 03 443 4430
--	---------------------------------------	--	---	---	---------------------------------------	---	---------------------------------------	---	--	--



Award-winning flair

BEAUTIFUL AND FUNCTIONAL SPACES MAKE EVERYDAY LIVING A JOY. DISCOVER HOW THE GUIDING HAND OF A PROFESSIONAL DESIGNER CAN HELP YOU ACHIEVE THIS DREAM IN YOUR HOME.



KIRSTY DAVIS

Designer and director of
Kirsty Davis Kitchen Design



Multi-award-winning kitchen and interior designer Kirsty Davis of Kirsty Davis Kitchen Design strikes the perfect balance between form and function. Her winning formula combines technical prowess with an innate creative flair that results in cutting-edge contemporary kitchens and cohesive interior schemes for the whole home.

Passionate about all areas of design, Kirsty's designs draw on an in-depth knowledge of current trends and the latest technology. Over the past 14 years she has worked hard building a solid reputation within the industry, and regularly gains national recognition. Most recently she scooped the prestigious Designer Kitchen of the Year award at the Trends International Design Awards (TIDA), as well as two NZ Master Joiner Awards: one for Best Kitchen Design

in New Zealand and the other for Best Kitchen in Canterbury.

Calling on her finely honed spatial design skills, Kirsty produces highly ergonomic spaces designed for optimal efficiency and comfort. Working in close collaboration with trusted suppliers and local craftspeople, she delivers exceptional results for her clients, no matter the style, size or budget.

'Having built up a stable of contacts, I have insider knowledge on who to call on for quality workmanship, and the ability to source quality products at the best price for my clients', Kirsty shares.

Tailoring spaces to meet the users' specific requirements is vital; and, by entering the picture in the early stages of a building or renovation project, Kirsty ensures a hassle-free process that can often save homeowners time and money.

'Getting involved early on is really the best approach', as homeowners can take full advantage of Kirsty's expertise and

contacts from the get-go. This enables her to take care of all the technical and logistical aspects – from the design to the management of tradespeople – so homeowners don't have to.

With a seemingly endless array of options and choices to make, homeowners can find the process overwhelming and often stressful. However, with Kirsty's industry and product knowledge, she is able to narrow down the choices of materials and finishes. This ensures an enjoyable experience for her clients, and means she is able to deliver spaces that are functional, beautiful and a pleasure to live in – day in, day out.

While designing kitchens and joinery is Kirsty's number one passion, she also enjoys creating the complete package for the entire home. 'I love the satisfaction I get from delivering intelligent solutions for spaces that are unique to every client.'

021 110 7769 | kdkitchendesign.com



the brief

Three-metre-high ceilings, vast expanses of glass and polished concrete floors set the tone for the look of this striking contemporary kitchen.

Carefully designed to be the point around which all the action revolves – whether it is a formal fine dining affair or casual everyday living – this award-winning kitchen ticks all the boxes.

With a clear vision of the look they were after, one that complemented their new modern home, the client specified an open-plan layout to include areas for food preparation, dining and entertaining, as well as a generous walk-in pantry.

In order to accommodate plenty of seating for casual dining and for entertaining, a six-metre-long island runs the length of the kitchen. And, to create an atmosphere that is both intimate and social, a cantilevered overhang at one end offers additional dining space.

The sink and cooktops were integrated into the kitchen island, from which the homeowners can enjoy the pastoral views.

Achieving a luxury finish, quality materials and products were used. From the high-gloss Deignatek door panels to the Caesarstone island benchtop, to Blum electric Servo-Drive fixtures and fittings, to high-end appliances, this award-winning kitchen is fit for a king.



Retrofitting radiators is simple and relatively inexpensive. And, with a diverse range of styles, colours and sizes on offer, radiators are no longer the eyesore they once were, and can be selected to blend in or stand out.

The heat is on

WHY IS IT THAT KIWIS CHOOSE TO TOUGH IT OUT, HEATING ONE ROOM AT A TIME, WHEN CENTRAL HEATING IS NOT ONLY SIMPLE TO INSTALL, EFFICIENT AND ECONOMICAL, BUT STYLISH TOO?

New Zealand is the only country in the world that uses air conditioning units to keep warm. Thanks to the multi-million-dollar marketing of international companies, Kiwis have widely accepted the use of heat pumps, which are basically air conditioning units running in reverse. This approach to heating has led to Kiwis hunkering down in one room during the winter months.

According to Environmental Health Indicators New Zealand, 'cold, damp and mouldy homes impact on our health and our children's health'. And, while people often associate these unhealthy conditions with villas and character homes, it is now commonplace to find mould in modern homes due to poor ventilation and spot heating.

Central heating is a method of whole-home heating where warm water circulates through a closed network of pipes, carrying heat around the home.

central heating benefits

COMFORTABLE

Central heating is the only heating method that heats the whole home evenly, allowing the full use of every room during winter.

HEALTHY

Warm water central heating eliminates cold spots, draughts and damp. Because there is no forced air circulation, it doesn't distribute irritating dust and allergens.

EFFICIENT

Water transfers energy at four times the rate of air, making warm water central heating systems much more energy-efficient than warm air systems, and thus more economical.

FLEXIBLE

Central Heating New Zealand offers a range of different heat sources and heat distribution combinations suited to each individual's lifestyle for optimal performance and cost benefits.



These pipes can lead to radiators or they can be laid in the floor. It's worth noting that underfloor central heating is, on average, two thirds cheaper to run than electric underfloor heating – so don't let horrific electricity bills from the past put you off the idea.

Central heating can be easily retrofitted into an existing home. The heat source, which can be gas, diesel or an air-to-water heat pump, is positioned in a garage, laundry or outside, and piping is run to radiators which are installed in every living space. Radiators can be coloured to blend in or stand out, and designer radiators, which can become a room's focal point, are also available.

If you are building a new home, experts suggest installing underfloor piping in your concrete slab foundation. This will provide you with the option of central heating later. It also provides an excellent return on investment when selling your home.

While heating is often an afterthought when building – with expensive granite worktops or designer bathroom fittings taking precedence – central heating is something well worth investing in at the outset. After all, what's the point in having a big beautiful home if it's not warm and comfortable year round?

0800 357 1233 | centralheating.co.nz

HYDRONIC UNDERFLOOR

HEATING BENEFITS

EFFECTIVE, EFFICIENT AND AFFORDABLE

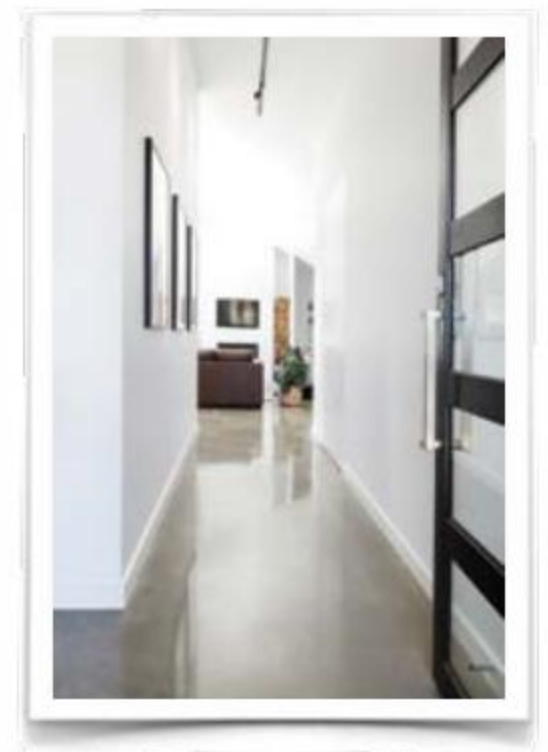
Kiss goodbye cold patches and draughts with hydronic underfloor heating. Because it uses far lower temperatures than a radiator system, it is a surprisingly cost-effective heating option for the entire home, especially for dwellings with high ceilings.

NON-ALLERGENIC

Given that there is no air to circulate dust or other allergens, it is a healthier way to heat the home, allowing allergy sufferers and asthmatics to breathe easy.

TRADITIONAL OR MODERN AESTHETIC

As this system is laid under concrete, it is compatible with a wide range of floor coverings to suit your architectural design. For a contemporary look and to harness the concrete's natural thermal properties, simply leave the concrete exposed and polish and seal it.





Innovation on tap

MODERN, FUNCTIONAL BATHROOM FURNITURE HAS NEVER LOOKED THIS GOOD WITH THE LATEST COLLECTION FROM ST MICHEL.

Over three decades, New Zealand bathroom furniture company St Michel has garnered a solid reputation for designing and producing quality bathroom furniture. A trusted local supplier to Oakleys Bathroom and Plumbing Supplies, the full range of St Michel products is available to purchase from Oakleys' Christchurch showroom.

Whatever your budget or design aesthetic, St Michel offers a comprehensive range of quality New Zealand-made bathroom furniture products, and their brand new range.

Delivering a perfect blend of modern and traditional elements, the all-new London Bathroom Furniture Collection from St Michel offers a variety of features and options to suit every bathroom. New Zealand-designed and made, this range offers a choice of vanity sizes, basin styles, wall or benchtop tap locations, drawers with or without handles, an optional splashback, matching mirror cabinets for every vanity size, and quality German-made soft-close hardware on all drawers.

Maintaining its position at the forefront of bathroom design and production in New Zealand, St Michel understands that bathrooms are far more than just practical spaces: they have become private sanctuaries in our



homes. While St Michel strives to push the envelope by using innovative design and technology to create new styles, each product is designed to be robust and durable, with a timeless quality.

St Michel keeps abreast of the changing face of bathroom design and continues to evolve with constant innovations. Producing world-class products from start to finish within their Auckland production facility ensures cohesive collaboration between the product development and manufacturing processes.

Using sustainable timber, each product is formed using state-of-the-art production processes. Creating elegant contemporary bathroom furniture, St Michel strikes the balance between traditional craftsmanship and innovative technologies.

Tailoring solutions for each bathroom project, Oakleys' experienced design consultants are on hand to guide clients through product selection, including: vanities, basins, cabinets, mirrors and lighting. And, paving the way for a stress-free journey with impeccable results, Oakleys is available to assist before, during and after installation, ensuring customer satisfaction and peace of mind.

For modern, yet timeless bathroom furniture and expert advice, visit Oakleys and view their extensive range of bathroom furniture, including the London Bathroom Furniture Collection from St Michel.

oakleysplumbing.co.nz | stmichel.co.nz



at a glance

THE LONDON BATHROOM FURNITURE COLLECTION

- + A choice of 4 sizes, with or without handles
- + Luxurious soft-close German hardware on all drawers
- + Cherry Pie premium solid surface bench and matte basin
- + A choice of 4 durable and easy-clean basin options
- + Optional splashback in matching Cherry Pie premium solid surface
- + Flexible wall or bench tap positions
- + Matching mirror cabinets for every vanity size





HouseMatters
with Mike Pero Real Estate

Work & play

CREATING SPECIALISED ZONES FOR WORK AND PLAY HELPS
KEEP THE LINES FROM BLURRING IN THE SAND.



MIKE PERO
Chief Executive,
Mike Pero Real Estate

As our inner and outer lives become more and more integrated, so too do our homes – places where we not only prepare for and complete our days, but where we live, grow, work and play. And, as our homes become more flexible, there are some very simple ways we can kit them out to suit our changing needs.

Rooms can perform dual functions or be specifically designed to cater to a particular task. In the first instance, guest rooms that are only used a couple of times a year can be designed to be used on a more regular basis to get the maximum benefit for the home's full-time occupants.

A guest room can double as a home office, craft workshop or music studio by simply investing in a good sofa bed that can fold up to allow space for other pursuits. And, if funds allow, you can have custom-made, built-in furniture designed especially to fit the space and your unique requirements.



WORKTIME

As workplaces become more flexible in allowing employees to work from home, clear boundaries between home life and work will help keep you on track, while ensuring you have the creature comforts that make working from home that much more enjoyable. Even if you don't work from home, a dedicated area for writing can become a place for quiet contemplation or a study nook for teenagers.

Ensure you have ample storage so that you can keep your desktop clutter-free, and enough natural light and ventilation to keep your head clear. Introducing plants helps keep the air free of toxins produced by computers and brings life to your work zone. Inject some fun and creativity with artwork on the walls, and invigorate your senses by burning a beautiful scented candle.



PLAYTIME

Spare rooms or other underutilised spaces within the home can be transformed to cater for your hobbies and interests. By installing black-out blinds and painting the walls a dark colour, you can easily transform any enclosed space into a media room where you can indulge in movie marathons any time of the day. While cleverly designed storage – either bespoke solutions handmade by a local joiner, or modular stand-alone or wall-mounted systems – allows you to convert dead space into a creative hub for musicians and craft enthusiasts, or into a reflective zone for meditation yogis.

Whatever your passions or pursuits, think outside the box and tailor your home to fit your life.

Cream of the crop

THE 2018 CANTERBURY ARCHITECTURE AWARDS CELEBRATE THE FINEST IN ARCHITECTURAL DESIGN, FROM PUBLIC SPACES TO RESIDENTIAL DWELLINGS. OUR PICKS FROM THIS YEAR'S WINNERS ALL DEMONSTRATE INTELLIGENT DESIGN, COMBINING CONVENIENCE AND COMFORT WITH EXQUISITE BEAUTY THAT ENRICHES LIVES ON A DAILY BASIS.

Award jury convener, Melanda Slemint explains what gave these winning projects the edge.

HOUSING MULTI UNIT AWARD



Dublin Street Townhouses

LOCATION

Christchurch City

ARCHITECT

CoLab Architecture

BUILDER

Garry Muirson Builders

Sole winner of the Housing Multi Unit Award, this inner-city complex impressed the judges on a number of fronts.

The three inner-city townhouses give a nod to the iconic 'Christchurch style', with gable roofs, colours and details in sympathy with the surrounding neighbourhood. Acknowledging the corner site, the gable ends are turned to address the primary street boundaries.

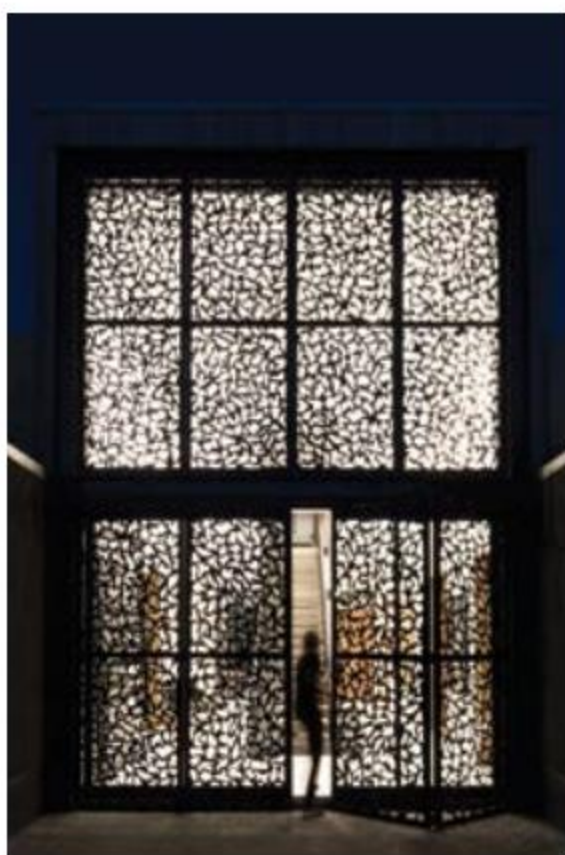
By bringing the three garages closer to the street, the architects' design has allowed more space for well-proportioned living areas within each dwelling, and the efficient planning is enhanced by a dynamic sectional quality to the houses.

Thoughtfully designed built-in joinery units add to the enjoyment of habitation, as does the skilful connection of interiors to outdoor areas, which will enhance everyday living.

Photography: Stephen Goodenough



HOUSING AWARD



Rhodes House

LOCATION

Merivale

ARCHITECT

PRau

BUILDER

Bradford Builders

Christchurch practice PRau received two awards: the Small Project Architecture Award for the 'beautifully crafted and elegant' Carters Estate Tennis Pavilion and a Housing Award for Rhodes House, a project described by the architect as a 'Cabinet of Curiosities'.

A Carlo Scarpa drawing is full to the edges, with no opportunity for insertion; so too is this home. The devil may be in the details, but in this case the detailing has enabled the basics to work.

For the client family, the overall composition works on many levels, from the stair that compresses the entry, through to the dark steel room that allows the mind to escape. The exterior cladding enlivens the house's suburban context and transforms the relationship between landscape and architecture.

Photography: Hazel Redmond



phil redmond
 architecture &
 urbanism

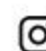
27 papanui road
 03 356 3198
 www.philredmond.co.nz

phil redmond architecture & urbanism



Architectural Homes
 Architectural Hill Homes
 Heritage
 Renovations / Alterations / Fitouts
 Design Build Options



 **avenue.homes** [avenuehomes.co.nz](https://www.avenuehomes.co.nz)

Ben Calvin 0274 444 1232 Sam Calvin 027 365 5558

HOUSING AWARD



Maison Rue Jolie

LOCATION

Akaroa

ARCHITECT

Paterson Architecture Collective & Glamuzina Architects

BUILDER

Avenues Homes

An exquisite response to the French-inspired vernacular context that defines Akaroa, several clever design elements were used to create a home that is contextual, but far from literal with respect to its surroundings.

A single level gable serving as a boatshed is a restrained cue to a composition of gables that is full of surprise, delight and colour. Internal volumes are linked to the immediate outdoor spaces and harbour views beyond, and are assured in scale.

Deft touches of colour subtly reinforce the link to the wider vernacular context, and the clever use of skylights, moveable timber screens and interior vertical timber panelling creates a beautiful play of light, and imbues the house with an appropriately maritime feel.

Also winning the Resene Colour Award, this home employs a refreshing vibrant colour palette that celebrates the relaxed maritime-inspired interiors.

Photography: David Straight & Mick Stephenson



HOUSING AWARD



Ellis House

LOCATION
Fendalton

ARCHITECT
Sheppard and Rout Architects

BUILDER
Gregg Builders

An earthquake rebuild, this light, airy, contemporary form replaces the original Georgian-style brick home, meeting the mandatory requirement to maintain a similar size and footprint. The client was clearly grateful to architect David Sheppard for his help in navigating through the insurance and managed-rebuild process.

With almost every room benefitting from views and connections to the saved gardens, the internal spaces are clear yet flexible, with privacy and transparency skilfully balanced.

Photography: Jamie Armstrong

Express yourself

With a home as individual as you



Over seventy years of experience in the building industry has given us a unique perspective on what it takes to truly deliver excellence.

We offer quality and transparency, planning and advice that is second to none in Christchurch and Canterbury.

We thrive on technical and creative challenges. These qualities have allowed us to build some of Canterbury's most memorable homes.


GREGG
BUILDERS LTD
ARCHITECTURAL HOMES

03 358 6491
greggbuilders.co.nz



Architectural Design • Quantity Surveying • Project Management • Interior Design • Design & Build • Property Sales





DEFINING DETAIL

This impressive high-end architectural home, designed by Walker Architecture and built by Switched On Building Solutions, captured all the desires of one Christchurch family.

WORDS DAVINA WHITCHER

PHOTOGRAPHY CLINTON LLOYD PHOTOGRAPHY & SNAP! PHOTOGRAPHY



With three grown-up children, grandchildren and a total of four dogs, Geoff and Sue sought a new place to stretch their legs. Prestons marked the perfect spot, and now the family celebrates a home that allows them to nurture family relationships and enjoy a better connection with the natural environment.

The couple's design brief was simple: clean lines, functionality and an uncluttered interior. Not a difficult task to achieve when you have a solid team of professionals working together to achieve the best possible outcome for their clients.

The decision to use Switched On Building Solutions to bring their vision to life wasn't made just because they were directors of the company. With 30 years of industry experience and a stellar portfolio of award-winning projects, the choice was a no-brainer.

Operations manager Ray Brill delivered a remarkable modern home with a simple design and cohesion between indoors and out. Before building commenced, the Switched On team knew this was going to be a challenging but rewarding project. For, while the design appeared to be simple on paper, the homeowners wanted to incorporate a raft of carefully selected details.

The fine craftsmanship of this one-level 373sqm home is apparent from the moment you feast your eyes upon its striking vertical cedar weatherboard exterior with tray roofing. Enhancing the presence of the home, the feature stone-work on the outside kitchen area also taps into the surrounding environment.

The world inside comprises three bedrooms, two

bathrooms, open-plan living and kitchen, scullery and a media room with a large overhead projection screen. Two private outdoor spaces stretch out towards the lake, by way of a large hardwood deck facing east, and a large tiled patio with outside fire and louvres facing west. It's a place the homeowners like to call their 'French Quarter'.

Switched On were determined to not only meet but exceed building guidelines. Items such as argon double glazing, superior insulation, polystyrene panels in the concrete floor and sound baffling between rooms were utilised. Level 5 stopping was



The use of only two materials on the exterior, cedar and tray roofing, achieves a simple, yet striking appearance.





KITCHEN

Contemporary clean lines are punctuated by a Navicula pendant light by iconic New Zealand furniture designer David Trubridge.

requested throughout, including in the garage and wardrobes.

The simple but effective architecture of the home is the handy work of Jason Walker, managing director at Walker Architecture. The design encompasses the homeowners' brief of creating a smart, contemporary home, with a layout – indoors and out – that delivers spaces for family life to play out and for entertaining friends. Jason was able to capture our vision 'to perfection', says Geoff.

The couple wanted 'to have openness to a point, but for the entertaining spaces to have a somewhat traditional degree of separation', explains Jason. The result is a house with simple cross geometric forms and a limited palette of natural materials. 'These two intersecting forms essentially demarcate the functions of the house, by splitting the public and private zones and giving the main living spaces the best views and plenty of natural light.'

The use of only two materials on the exterior, cedar and tray roofing, achieves a simple, yet striking appearance. 'Cedar is a warm monolithic cladding, but is still extremely sharp in appearance', says Jason.

The interior contrasts with the exterior, and the words 'light on its feet' come to mind. The use of neutral Resene paints, including Half Wan White



on trims, Resene Surrender in the main bedroom, and Resene Half Casper in the guest bedroom, creates a light, bright interior. The no-fuss décor accentuates the less-is-more approach and reflects the homeowners' style.

Awning windows and double doors throughout



landscape architecture

DESIGN | BUILD | MAINTAIN

308 Trents Road . Prebbleton . Christchurch . Ph 03 977 5332 . www.morganpollard.co.nz



the home not only allow light to reach the far corners, they enable the homeowners to look to the garden and lake with a fresh perspective depending on the lookout spot.

'We have multiple areas to utilise', says Sue – 'from reading a book in the main bedroom with its beautiful views, to sitting out on the deck that is cantilevered over the lake, to enjoying a wine in front of the outdoor fire as the sun goes down. On sunny days we can open the sliders in the informal dining area on both sides and have a very nice inside-outside flow. Our new house has a lovely homely feel, which was exactly what we wanted', she says.

Jane Swinard from Jane Swinard Design was tasked with making the interior flow. A wide range of finishes were used, from flooring, wall colour, wallpaper and furniture, through to bedding and accessories, to achieve a sense of 'unpretentious comfort and style'. Jane worked closely with kitchen and bathroom designer Ingrid Geldof to perfect these finer details.

Jane says that Geoff and Sue had 'a real appreciation for quality and fine detail', sharing that she sometimes pushed them 'beyond their comfort zone' in order to create a house 'with soul'.

Warmth was created throughout the home with the use of timber that adds richness and interest, and lighting, supplied by Accent Lighting. The lighting design was carefully considered to enhance the home's sleek, modern style. Accent Lighting is known for its unique fittings sourced from all over Europe, and the choice of lights provides the home with appropriate illumination to create a flattering ambience and subtle glow.

The kitchen needed to be extra special.

'Our daughter is an accomplished cook with professional experience, and we envisaged many good times preparing meals together', says Geoff. A recommendation from the architect put Ingrid Geldof, award-winning kitchen and bathroom designer, into the playing field.

Ingrid's expertise drove the design of the kitchen and walk-through scullery, which needed to be spacious and have effective functionality with multiple ovens and bench space. 'We discussed all the couple's needs and wants in depth', says Ingrid, 'and decided upon creating a central core with the kitchen and scullery spaces'.

Formulating a design in a relatively narrow area





DINING ROOM

A sculptural gold pendant, designed by Tom Rossau from Denmark, complements the linear wallpaper in this elegant formal dining room.

proved challenging, particularly with the clients' storage requirements. So, Ingrid designed the scullery to be 'completely hidden on the side so the space reads as one box'.

She chose to wrap the room in a dark-stained crown-cut American oak veneer to add contrast to the neutral backdrop and 'bring a bit of the outside in'. Coated in lacquered Resene Wan White is the kitchen island joinery with Caesarstone Osprey bench. 'The black frame at either end of the island emulates the top of the chimney on the outside of the house', she adds.

The bathrooms were designed to be private, but also to allow more than one person to use them at once. In favour of a touch of drama and character, patterned walls were achieved in the guest bathroom using Cole & Son Malabar Bronze on Black wallpaper.

Stylish fittings and tapware from Oakleys Plumbing Supplies provided the final key touches. Oakleys' consultant Ashlee Marsden worked alongside Ingrid Geldof and co-designer Rachel Barnes to select smart, high-quality bathroom products and plumbing supplies. The guest bathroom features a Victoria + Albert Amalfi basin made of Quarrycast, a material made using finely ground volcanic limestone; meanwhile, a Cupid bath adds 'a sculptural element', says Ashlee.

When it came to the kitchen tap, the homeowners sought one that lit up, and Oakleys had just the ticket. 'The Italian-made Gessi sink mixer, from Plumblinc, lights up the water coming out and changes colour as the temperature changes.'

From the neutral, glistening porcelain floor tiles in the open-plan kitchen and dining rooms, to the textured Porcelanosa tiles that offer a sleek twist in the bathrooms, Nextdore ensured the home makes a timeless and impressive statement. The surface specialists know how to add a touch of European luxury with innovative design and supreme quality – combining first-class materials in a natural and well-thought-out way.

Outside, Morgan + Pollard Landscape Architecture set the entire garden on the right track – achieved in part thanks to the couple's forward

planning in reclaiming part of the existing lake, and their preliminary effort planting natives to attract the bellbirds, quail, pheasants and fantails.

Adam Pollard, managing director, describes how he had to work with a site that was particularly wet with peat soil. With this in mind, Geoff and Sue decided to raise the whole floor 300mm following water level concerns raised post-earthquake.

Adam selected a range of plants that were suitable for wet conditions, sourced from all over New Zealand. The shrubs around the garden help to 'connect the home to the ground, softening lines and providing a natural feel to the house', says Adam.

Everyone involved in the project, from the builder to the landscape architects, made the entire experience a pleasure from start to finish.



GUEST BATHROOM

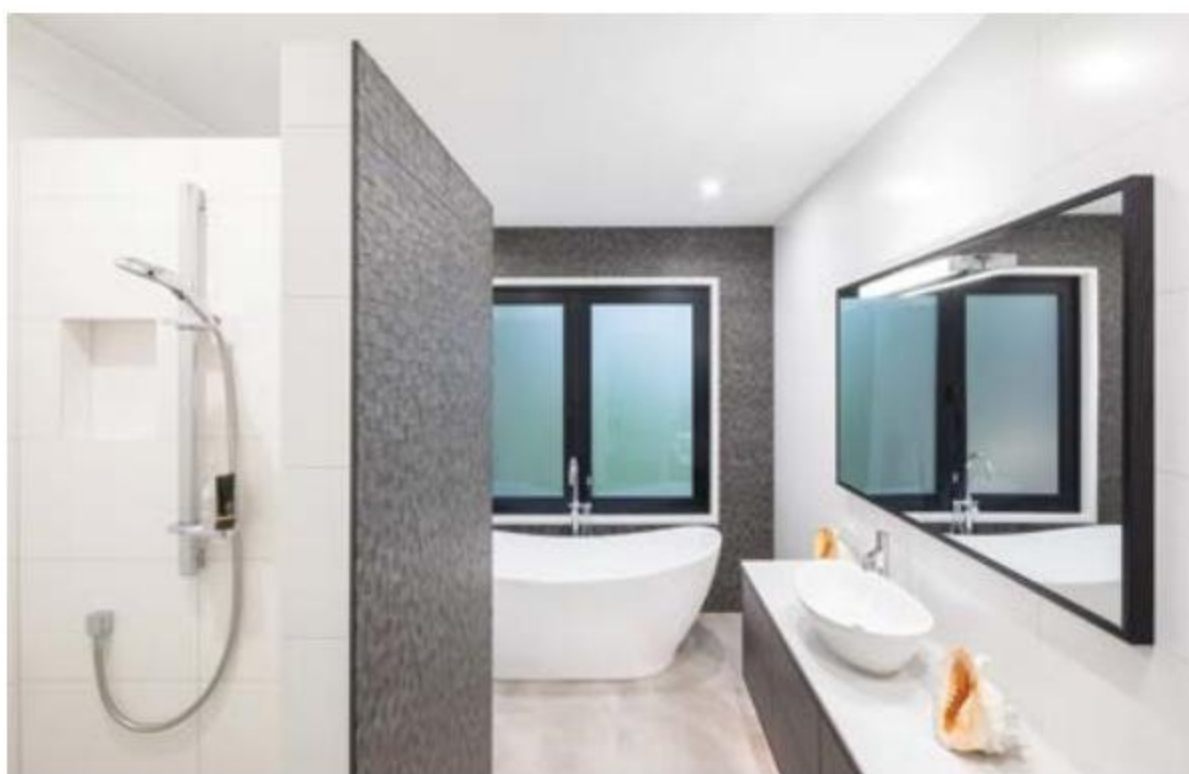
Jane Swinard selected dramatic black patterned wallpaper to adorn the guest bathroom, coupled with Spanish Tibeta pendants from Accent Lighting.

‘Let’s face it: you hear stories of how building was “a nightmare”. An honest and trusting relationship has to be built and developed throughout the process, to ensure all parties are happy with the outcome’, Geoff says.

‘We’re really proud of our Switched On family who were helpful, polite and professional. The subcontractors delivered excellent service and everyone worked well together.

‘The finished result is of an extremely high standard, which has allowed us to enter the house into multiple awards this year for painting, building and joinery’, he continues.

Switched On couldn’t be happier with the outcome. ‘We came out with a high-quality home that everyone should be proud of’, Ray says. ‘Geoff and Sue were excited about the progress of the build, and appreciated the time we took to communicate with them at every stage. They had been dreaming up their new home for a very long time and knew exactly what they wanted. We are proud to have been able to deliver a home that they love.’



INVOLVED IN THIS PROJECT

BUILDER

Switched On Building Solutions
03 373 8320
switchedon.net.nz

ARCHITECT

Walker Architecture
03 355 6012
walkerarchitecture.co.nz

FLOORING

Nextdore
03 366 9400
nextdore.co.nz

INTERIOR DESIGN

Jane Swinard Design
0274 317 885
janeswinard.co.nz

KITCHEN AND BATHROOM DESIGN

Ingrid Geldof Design
03 377 2557
igd.co.nz

LANDSCAPE

Morgan + Pollard
Landscape Architecture
03 349 8228
morgan-pollard.co.nz

LIGHTING

Accent Lighting Ltd
03 379 0600
accentlighting.co.nz

TAPWARE AND BATHROOM FITTINGS

Oakleys Plumbing Supplies
03 379 4750
oakleysplumbing.co.nz



Expect the highest quality workmanship from our Master Tradesmen

Quality and precision guaranteed



(03) 373 8320
switchedon.net.nz

pitch perfect

In a welcome departure from suburban convention, Candice and Scott Waller's family home has been masterfully constructed by LM Built in a way that every aspect has been thoughtfully considered and articulated.

WORDS KRISTA COUPLAND **PHOTOGRAPHY** MICK STEPHENSON
PRODUCTION & STYLING FROBISHER INTERIORS & MAJKA KAISER







Described by Scott as an urban sanctuary with a rural outlook, the home has a somewhat subtle presence from the street, then opens up to reveal clever and interesting spaces, each one with its own view and atmosphere.

Far from a happy accident, Scott says the uniqueness of the Westmorland home is the result of careful collaboration between 'possibly the world's fussiest client', an awesome architect, and a fastidious and clever builder.

The Wallers are no strangers to building, and as an engineer Scott has house plans come across his desk daily. The library of ideas and wealth of experience he has developed over the years means he had a firm idea of what he wanted in his own family home.

'I was extremely specific. The worst clients are engineers, I'm sure!'

No strangers to high-end architectural builds, LM Built, led by Leo Meredith, came highly recommended by Scott's 'super fussy' best mate.

Leo lived up to his stellar reputation and turned the Wallers' dreams into reality with immaculate workmanship and meticulous attention to detail.

The Waller abode is a contemporary barn-style pavilion house. The high pitched roof is juxtaposed with flat sections joining the four pods. The jewel in the crown is the stunning courtyard – a beautifully sheltered and liveable private realm.

Leo kept a constant eye on the project and solved

any issues that arose throughout the build. Leo's skilled project management meant these were very few and the process was headache-free.

'Teamwork is what sets us apart', says Leo. 'We are passionate about making the building process stress-free and enjoyable for our clients.' Candice and Scott were able to liaise directly with Leo, so



KITCHEN With oak and lacquered joinery, a marble benchtop and a glass splashback, which mirrors the garden-scape behind, this kitchen marries design and function. The separate scullery is cleverly tucked away.

never felt out of control of the building process and were always kept informed of progress.

Some of the special features of the home are thanks to Leo's innovative ideas. The stunning cedar entranceway was a collaboration of Leo, his site foreman and W2 Limited's architectural designer, Matt Wilkie. The floating bench in the ensuite is also a great example of Leo's 'think outside the norm' attitude towards building houses.

'The couple listened to our ideas and trusted our judgment', explains Leo. 'Scott was very particular and knew exactly what he wanted. It was extremely satisfying for us to finish the build and have the Wallers completely satisfied.'

Leo says restricting the number of homes built each year ensures each project gets the attention it



Artwork: Lisa Ferguson

The home has a somewhat subtle presence from the street, then opens up to reveal clever and interesting spaces, each one with its own view and atmosphere.



KELLY HOPPEN

frobisher
INTERIORS

Exclusive stockists of Kelly Hoppen.

Now Open in Wanaka.

www.frobisher.co.nz
Christchurch | 322 Manchester Street | 03 355 2628
Wanaka | 21 Reece Crescent | 03 433 2025



deserves. It also means Leo is able to oversee the design and construction quality on every home, ensuring every last detail is professionally evaluated before being handed over to the client.

The wow-factor of this home lies in its ingenious architecture. W2 Limited's architectural designer Matt Wilkie, with whom Scott had worked before, was responsible for the design of the substantial home. 'Matt is awesome', Scott says. 'He's clever and innovative, and quite out-there with ideas at times.'

Matt refined the design with particular focus on sun and outdoor living. He was also responsible for some of the clever detailing that makes this home special. 'Simple ideas like recessing a sliding door track into the ceiling provides a seamless connection between spaces, adding height and simplicity to the interior', Matt says.



Kāhū
Elegantly Strong

The new Kāhū® roofing and cladding profile will add elegance, extra strength and style to any residential or commercial project.

Designed for roofs to 4° minimum pitch and suitable for both horizontal and vertical wall cladding. Manufactured in Christchurch and available nationwide in COLORSTEEL® ENDURA® and COLORSTEEL® MAXX®.

Image of the Kāhū ©Simon Larkin Design.

Greater weather performance is achieved with the double capillary overlap, giving you extra peace of mind. The double capillary overlap requires only a one rib lap, increasing the cover sheet size and speeding up installation time.

Nationwide : 800 341 341
Christchurch : 03 349 7350
www.metalcraftgroup.co.nz

Metalcraft
Roofing



To ensure there were no nasty financial surprises and overruns, which can happen without adequate building preparation, Focus Project Services took control of the quantity surveying. ‘A project’s success is largely determined by work that is done prior to the build even starting’, Darryn Crawford from Focus explains.

His team ensured the financial aspect of the Wallers’ project was complete and robust, based on the documentation provided. This set LM Built off on the right foot and ensured the Wallers had an accurate cost of the whole build.

At the heart of the design was engineering company Powell Fenwick, who provided structural, electrical, hydraulic, mechanical and sustainable design for the project. The desire to improve energy efficiency was important to the couple. Features

BEDROOM (LEFT)

Creating a bedroom to love, the velvet green upholstered headboard is partnered with a feature wall papered in birch trees. The theme of bringing-the-outside-in is continued in the green accents on the curtains from Frobisher Interiors.

BATHROOM & POWDER ROOM

A sanctuary in itself, the bespoke family bathroom features custom-built oak joinery, including a floating shelf cleverly suspended from the glass wall by LM Built. The powder room is distinct with its feature wallpaper imported from the UK and carefully matched by GreyTone Painters and Decorators.

BUILDING SUCCESS IS OUR FOCUS...



“Communication,
planning and
attention to detail
have all been superb.”

Juliane, Focus Project Services client

PROJECT MANAGEMENT

QUANTITY SURVEYING

CALL 022 350 8998
or visit focusprojects.co.nz

FOCUS

PROJECT SERVICES



like LED lighting, solar hot water, as well as High R-value insulation by Earthwool, argon filled glazing and a thermally broken glazing suite were all Powell Fenwick's solutions to reduce energy costs.

An immaculate finish on the interior walls was delivered by GreyTone Painters & Decorators. In keeping with the crisp lines of the home, the team used white hues throughout from both the Resene and Dulux paint ranges. The only deviation was feature wallpaper, which adds an element of fun in the bedrooms.

A lot of time goes into preparing the walls and trims for a quality finish, says Tony Mckenzie from GreyTone. For extra durability the team used Resene oil based enamels on the trims, doors and skirtings. The result is perfection.

A perfect partner to high-end contemporary homes, Raylight Aluminium was in charge of the aluminium joinery. The team chose Allseasons

Thermally Broken Suites from the Nulook windows and doors range, a firm favourite with builders and architects. The custom-made joinery is finished in matt black and complements the home's architectural form. A special feature is the advanced thermal performance.

Specialists in their field, Metalcraft Roofing were contracted to supply and install Espan 470 Architectural Tray Roofing. Espan has a unique clip system which allows for a seamless finish, making it a favoured choice of builders and architects. The high ribs create strong defined showdown lines and, together with concealed fixings, provide for superior weather performance. The Wallers chose the colour Tempest, as supplied by New Zealand Steel, with the Endura paint finish. Tempest is a low-gloss version of Ebony, and helps reduce bright light reflection on sunny days and when the sun is at a low angle to the roof.

OUTDOOR LIVING

The home is designed to wrap around and open out onto the central courtyard area. A steel pergola covered with timber battens filters the light, creating further interest to this outdoor realm.



**'beauty is
in the detail'**

0800 222 131
Lmbuilt.co.nz



The icing on the cake of any house is the interior decor. Working closely with the clients, Lucy Wilkie and Ryan Twomey from Frobisher Interiors added their flair to create elegant, stylish spaces individually tailored to deliver the sort of living the family envisioned.

Drapes were used in the kitchen and living spaces to soften these spaces. Privacy wasn't an issue on this secluded site and so they were able to use soft, unlined fabric which allows light to filter through. Shutters were also used to complement the clean lines of the architecture. The children's bedrooms feature roman blinds, which worked with the Wallers' choice of wallpaper.

Lucy also styled the home, mostly using pieces from international designer Kelly Hoppen, whose Retrospective Collection is available at Frobisher.

Scott and Candice and their two young children moved into their abode in autumn this year and the house immediately felt like home. Every space works perfectly, and the clever design and high-end workmanship on every aspect of its design and construction has paid off.

'Returning at the end of the day feels like coming home to my own sanctuary', Scott says. 'It's so private and I love its rural aspect. It's perfect.'

EXTERIOR

The outside cladding is a striking mix of western red cedar and a plaster finish in Resene Wan White.



INVOLVED IN THIS PROJECT

BUILDER

LM Built
0800 222 131
Lmbuilt.co.nz

ALUMINIUM JOINERY

Raylight Aluminium
03 366 5637

ARCHITECT

W2 Limited
03 366 0966
w2.nz

ENGINEER

Powell Fenwick
03 366 1777
pfc.co.nz

INTERIOR DESIGN

Frobisher Interiors
03 355 2628
frobisher.co.nz

PAINTER

GreyTone Painters & Decorators
021 354 803

QUANTITY SURVEYOR

Focus Project Services
022 350 8998
focusprojects.co.nz

ROOFING

Metalcraft Roofing
03 349 7350
metalcraftroofing.co.nz

Powell Fenwick places a strong emphasis on buildable, cost effective and sustainable design solutions offered with a flexible, service based approach.



Structural • Mechanical • Electrical
Fire • Civil • Hydraulic • Acoustic

T. 03 366 1777 • E. engineering@pfc.co.nz • pfc.co.nz

DINING Creating a blueprint for modern urban living, every fixture and fitting has been selected for its quality and sleek style. The floors are Italian stone and timber. The 16th-century French table is the centrepiece of this luxurious space.





best dressed

This captivating transformation by KI Commercial has created a blueprint for future bespoke developments.

WORDS KRISTA COUPLAND **STYLING & PRODUCTION** OLIVIA SKENE DESIGN
PHOTOGRAPHY MICK STEPHENSON & PAUL WHEELER



The project was an extensive renovation of a four bedroom townhouse in the heart of Merivale. The result is a light-filled and expansive abode that provides a new exemplar for living in the city.

Leading the project and asking for meticulous attention to detail, project manager for KI Commercial, Paul Keung, and his team of experts put absolutely everything into creating a home that showcases the best of design, materials and workmanship.

This renovation is the best example of luxurious living the company creates for their clients. Paul says his team of building professionals pushed the envelope. 'We did not want to create another boring square box, but rather something top-end and timeless. We are about sustainability, and this house will be here to serve generations to come.'

In the future, KI Commercial is looking to build homes of a similar standard in the Addington area and overlooking Hagley Park.

Although the home was not a casualty of the quakes, the owner seized the opportunity to improve the engineering above and beyond the new earthquake regulations and create an exceptional interior at the same time. Over two years, the \$1-million-plus undertaking has seen the house pretty much rebuilt.

One of the first people on board was lead architect Graham McDermid of Architects Plus. Architects are people of vision, and Graham was



KITCHEN The \$150,000 kitchen renovation includes an American Oak island benchtop and an equally impressive granite benchtop imported from Brazil.



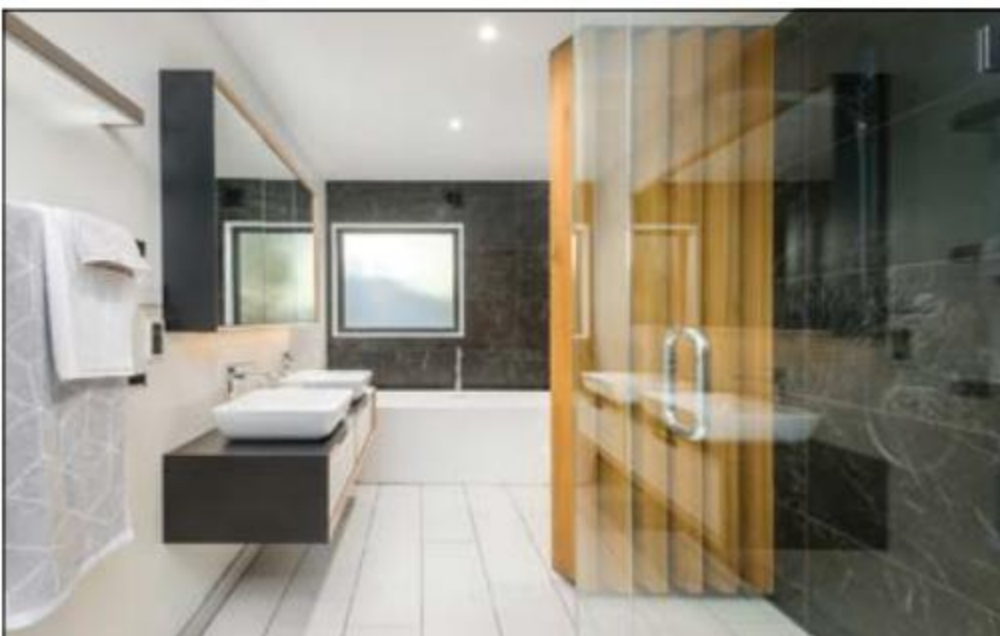
engaged to open up the internal spaces to create connection with the outdoor areas. The design of the feature fireplace is credit to Graham's vision, as is the design of the glass balustrade that opens up the stairway and pours light into the house. Upstairs, he redesigned the bathrooms and created a new custom-built office and kitchenette complete with Vintec wine bar, which is off the master bedroom.

Forward-thinking property advisor and Bayleys Canterbury's number one residential salesperson, Adam Heazlewood was the consultant on the project, advising Paul and the owner on what was expected in high-end luxury properties. 'This

property has been renovated with no compromises. This is a new level in residential luxury', Adam says.

Such a high-end build demanded contemporary, modern bathrooms. Three bathrooms plus a powder room service this house. Lesley Storm from Edward Gibbon worked to breathe new life into what is one of the most frequented rooms in a house. Most of the fittings and fixtures are imported and include high-end Hansgrohe tapware, two Palermo baths and Curvestone heated towel rails. The shower glass had to be custom-made by Euroglass. Each element of the bathroom was carefully selected for its quality and sleek style.

OUTDOOR LIVING
Large bi-fold doors create seamless flow to the outside.



ITALIAN CERAMIC TILES

Italian Ceramic Tiles is a specialist in Premium Porcelain floor & wall tiles for every style and application.

03 3486 919 / sales@italiantiles.co.nz
31 Mandeville street, Riccarton, Christchurch



LIVING Arguably the best seat in the house is this custom-made sofa which is filled with several cubic metres of top quality duck down. The home has been carefully styled with luxury in mind.

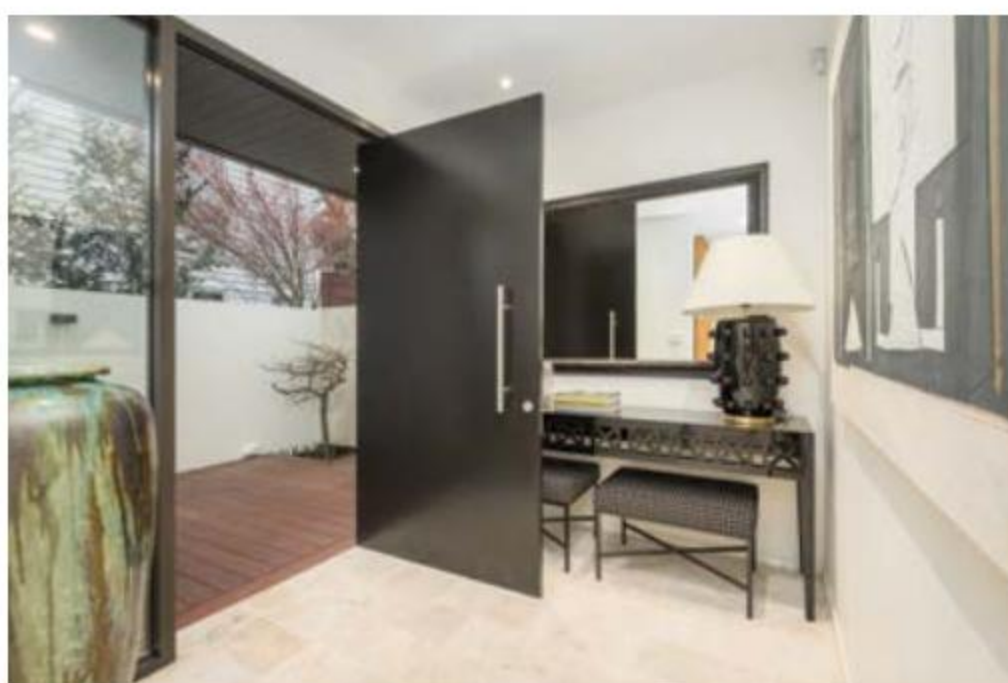
The home's pièce de résistance is undoubtedly the kitchen that features two benchtops; one uses a solid slab of American Oak, while the other an exquisite Brazilian granite. Paul says the house is the first in New Zealand to use this particular granite, which also makes an appearance in the laundry and powder room.

The stunning furniture pieces by Trenzseater that feature throughout the home were carefully selected by Georgia Langridge from Modi Design. And, the sumptuous linens, in a variety of styles, were imported from a myriad of places around the globe.

There's a 16th-century French table and a beautiful linen couch that has been custom-made and filled with several cubic metres of duck down.

Proving good things take time, there was a six-month wait to get the right carpets and a Ralph Lauren rug, and it took the same time again to source the hand-beaten basins from Mexico, which feature in the kitchen and bar, laundry and bathroom.

Bringing a wealth of experience and knowledge to the project, Jo Thomson from Italian Ceramic Tiles used beautiful Italian products, natural stone and porcelain to further enhance the design of the house. For the living areas, powder room and



fireplace, Travertine Natural Stone from Italy was selected for its raw quality, with beautiful hues of creams and soft grey. The porcelain tiles used in the bathrooms are sophisticated, and marry beautifully with the simple natural elegance of stone to create spaces of high visual impact.



P 03 3798086
 M 0274 330086
 graham@architectsplus.co.nz
architectsplus.co.nz



BEDROOMS Beautiful bedrooms are dressed with the very best linens imported from around the globe.

BATHROOM Hand-beaten copper basins imported from Mexico are matched with a granite vanity top imported from Brazil for a truly one-off luxurious space. No expense was spared on the remodelling of the home's bathrooms.



**INVOLVED IN THIS PROJECT****BUILDER**

KI Commercial
027 765 4100
kicom.co.nz

ARCHITECT

Architects Plus
03 379 8086
architectsplus.co.nz

BATHROOM SUPPLIES

Edward Gibbon
03 366 1620
edwardgibbon.co.nz

EXTERIOR PLASTERING

Redrock Plastering
027 399 5971
redrockplaster.co.nz

Resene Construction Systems
0800 50 70 40
reseneconstruction.co.nz

FLOORING

Italian Ceramic Tiles
03 348 6919

FURNITURE SELECTION

Modi Design
027 200 3840
modidesign.co.nz

PROPERTY ADVISOR

Adam Heazlewood
ahteam.co.nz
027 327 7298

The facelift also extended to the home's exterior. A new Cambrian Welsh tile roof was copper trimmed. Contrasting with the newly finished James Hardie Linea Weatherboard, the skilled craftsmen at Redrock Plastering completed the exterior finish using Rockcote Integra Lightweight Concrete Panels from Resene Construction Systems.

Chosen for their aesthetic appeal and high-performance qualities, this plaster facade is a lightweight, durable and low-maintenance cladding solution. Providing the home with a weather-tight envelope, it also offers remarkable acoustic benefits for high-density living.

Originally made with only a 50 per cent investment and later a 100 per cent investment, the owner is now ready to tackle a new project.

With just a few details to finish that will include a louvred outdoor entertaining area and a built-in barbeque, the end is in sight.

The owner says the project is a great investment in one of the best streets in Merivale, so close to the park, tennis court and a short walk to the mall. No one has lived in the newly renovated abode.

It is conveniently located at the end of a quiet street in one of the city's most sought-after areas. And, with an attractive furniture package, Paul is confident this stunning transformation can proudly wear the title of 'best dressed renovation'.

MAIN BATHROOM

Contemporary and stylish, the main bathroom features Plumline vanities and a Palermo bath. Italian tiles are sophisticated and create high visual impact, while heated floors and mirrors featured in all bathrooms offer added comfort and convenience.



**ADAM
HEAZLEWOOD**
RESIDENTIAL &
DEVELOPMENTS

BAYLEYS

WHALAN AND PARTNERS LTD BAYLEYS
LICENSED UNDER THE REA ACT 2008

No.

1 Bayleys Canterbury
Residential
2017-2018



P 03 375 4710
M 027 327 7298
W ahteam.co.nz



HALLWAY

Etienne opened up what was originally a hallway between the dining room and living room to create a central, convivial kitchen area. 'My original palette only featured darker colours, but here in the middle of the home, I realised I needed some colour - and pink was it.'



Painted lady

Capetonian interior designer Etienne Hanekom took a somewhat derelict Victorian country home and transformed it into an enigmatic and super-cool weekend escape

WORDS VICKI SLEET **STYLING** SVEN ALBERDING **PHOTOGRAPHY** WARREN HEATH/BUREAUX



KITCHEN

The dining area looking towards the kitchen is a showcase of Etienne's eclectic and interesting style. The zebra trophy head was found on Gumtree [a local classifieds site] while the kitchen island was custom-made – it consists of a steel frame with two contrasting pieces of granite used as the top.

wall was one of the first things to go' – Etienne has transformed his lucky country find into a dramatic and rather enchanting space where friends congregate for food and wine-fuelled weekends and a chance to catch their breath in inspired surrounds.

No stranger to major interior projects, brave refurbishments and out-the-box home, retail and hotel rethinks, Etienne applied his know-how and his somewhat devil-may-care attitude to this home, turning things on their head. 'I turned the house's focus right around', he says.

'I find it so interesting that in those days houses were designed for everything to happen in the front – there were three doors leading to the front step and just one door leading out to the back, the area I now love the most. People want to be a lot more private these days, so I opened the house up at the back and created a huge stoep [veranda] with glassed doors leading onto the garden, a braai [barbecue] area and a pool.'

The house is a u-shape with four bedrooms in total, two on the left and two on the right hand side of the front passage. The kitchen, which would have

Much of the Victoria era was about being rather prim and certainly very proper, and, other than the 'fripperies' of lace-patterned iron-mongered trims, homes built in South Africa during this era tend to follow a definite plan and style without digressing from the architectural norms of the time.

Rural towns are full of examples of these Victorian homes and, for the most part, they're viewed with fond nostalgia, with many since restored to their former glory, filled with gleaming antiques and Persian rugs.

For interior designer Etienne Hanekom, that's the last thing he envisaged for the down-at-heel Victorian dame he discovered in Robertson, a country town situated an hour and a half from Cape Town, where he lives and works. 'I discovered the house by mistake. I was looking for a weekend place and a project and had been to see another house in the town which I didn't like, but on my way out of town I spotted her', he says.

Etienne's soon-to-be project was in a bit of a state: 'she was uncared for – a pretty lady with a bit of a windswept and sunburnt old face. She needed a lift.'

And lift her he did. From a staid space with some bad additions – 'the hideous 70s' boundary



Etienne had the green velvet chair custom-made while the lamp is by Front design for Dutch design brand Moooi.





LIVING ROOM The living room zone of this large central area is an intimate space, reminiscent of a gentlemen's club.
BEDROOM The dormitory is home to three four-poster beds - bringing a sense of grandiosity to a practical solution. The blankets are from a Kurt Pio Colab Collection for local homeware brand MRP Home.
GUEST BATHROOM The guest bathroom is lined with Hicks' Hexagon wallpaper from Cole & Son and features an eclectic combination of subway tiles, hanging plants and a lean lined glass and metal bathroom vanity.



patterned wallpaper, some of it sparkly, to pressed ceiling panels used as wall coverings, wide architraves and glittering chandeliers. And, of course, taxidermied trophies aplenty.

There is a gallery wall of 'family portraits' picked up in local junkshops, including one of HRH Queen Elizabeth II, and another of kitsch landscape prints. There's even a golden garden gnome who hangs out on the back stoep.

Another surprise in Etienne's home is the grown-up 'dorm room' where three single poster beds are the overnight digs for singleton sleepovers. And, as with the rest of the house, it's the unexpected juxtapositions that do the talking here too – embellished Victorian sconces are mounted above beds clad with graphic black and white blankets, while Springbok trophy heads keep watch over their charges.

It's clear that, when it comes to interiors and certainly his own space, Etienne follows no rules – and therein lies the marvellous magic!

been tucked away at the back of the house originally, is now in the middle of the home, as is the lounge – they face each other.

But the heart of the home is the semi-covered, sprawling stoep filled with oversized chairs, flowering plants, collectables and conversation starters. It's here that friends congregate on weekends, piling in on a Friday afternoon and dragging themselves back to town come Sunday evening. 'This space is crucial to the wellbeing of the house. It's where we live, drink, swim, sleep and laugh on weekends', says Etienne.

From an interiors perspective and true to form, Etienne's Victorian home is anything but conformist. 'My original theme was ashes to ashes and dust to dust, but I tried to bring in light tones and it didn't work', he explains, 'so my palette is black and grey for the outside with muddy charcoal tones inside and pops of colour here and there.

'For the kitchen area, where we knocked things out, I brought in some pink', he continues. The salmon pink is indeed an unexpected surprise in this moody, shadowy space and offers a snapshot into the quirky character that Etienne pours into all of his projects.

There's a certain sense of opulence here too, thanks to the layers of interior details, from

OUTDOOR LIVING

A contemporary conservatory with nods to the past, the stoep is a lush and inviting space and a hive of activity come the weekend.



Interior designer Etienne Hanekom outside his characterful home in Robertson.

create the look

HEIRLOOM MEETS MODERN ICON



Resene
Raven

Resene
Cordite

Resene
Artefact

CLOCKWISE FROM TOP LEFT Windward & Jungle Fabric fabrichouse.co.nz; Moooi Dear Ingo Pendant Light ecc.co.nz; Green Marble Living Bowl boconcept.co.nz; Metallic Kartell Masters Dining Chair mckenzieandwillis.co.nz; Aparici Aged Tiles nextdore.co.nz; Astor Sofa dalewis.co.nz; Resene Raven, Resene Cordite and Resene Artefact resene.co.nz; Cire Trudon Room Spray worldbrand.co.nz.



UNO

*Minimalist shape and
purity of design.*



ELEMENTi

ideas@robertson.co.nz
ROBERTSON.CO.NZ



A good fit

OFFERING A HIGHLY PERSONALISED SERVICE IN THE MOST INTIMATE OF SETTINGS, THE FITTING ROOM'S SECOND LOCATION WAS CREATED WITH FEMININITY AND COMFORT IN MIND.

Catering to a niche market in Christchurch, The Fitting Room offers bras in fuller cup sizes (C-K), alongside breast prosthesis and post-mastectomy bras, and swimwear in all sizes.

When Deborah Lewthwaite set her sights on a second location for her Fendalton store, she had a clear idea of what she wanted. However, bringing such a vision to fruition can be a challenge to manage on your own.

After her laboured efforts to find just the right wallpaper to match some fabric, it wasn't long before Deborah realised that calling in the expertise of the professionals would save her considerable time and energy.

'Because of the intimate nature of the specialised service we provide, it was vital that the space was designed in a way that welcomed customers into the store to browse, but also included a private zone toward the rear of the store where fittings could take place.'

Seeking an interior fit-out that complemented their product range was important, and Deborah was keen to retain the feminine touch created

in their original store, with more of a contemporary feel in the Colombo Street location.

A departure from the regular residential projects they are known for, Victoria Gibbons and Gabrielle Herrick, from architectural and interior design consultancy company, Halliburton Gibbons, say they loved the store's concept of 'women helping women to create a better shape and to grow in confidence.

'It was a fun project to work on and we're thrilled to have created a beautiful space that's a pleasure to be in – for the staff and their customers', Gabrielle continues.

With a view to 'keeping it fresh, fun and feminine', while retaining a similar feel to the original store, a palette of hot pink, cream and fawn, with a touch of gold, was used. The stunning geometric pattern of the wallpaper in the fitting area achieves the more contemporary style that Deborah envisaged for the new store.

While Deborah and her shop manager, Clemency, liaised with Gabrielle and Victoria on the spatial design details, colours and finishing touches, Deborah's husband project-managed



the construction of the shop fittings. The simple raw plywood joinery was made locally. To bring out the natural beauty of the timber, increase durability and give a luxurious smooth surface on all display units, a spray finish was expertly applied by Finishing Solutions using a clear polyurethane.

In order to complement the fitting room curtains, Finishing Solutions gave the antique-style chairs a distressed look.

'Extremely pleased with the result', Deborah says the new store helps customers feel at ease and makes the experience fun.

0800 GR8 FIT | thefittingroom.co.nz
021 981 973 | halliburtongibbons.co.nz
03 338 8809 | finishingsolutions.co.nz



Louvre Solutions customised louvre roofs are engineered and designed to withstand the New Zealand elements



Create the perfect outdoor room all year round

Control the environment at your fingertips

Call us today 0275 356 286

 **Louvre Solutions**
NZ Ltd

louvresolutions.co.nz



Cloud Forest Dome at Gardens by the Bay in Singapore.



Going green

LANDSCAPE ARCHITECT TONY MILNE MUSES OVER OUR PREDILECTION FOR GREENING IN OUR INTERIOR SPACES.



TONY MILNE
Rough & Milne
Landscape
Architects

Historically we have associated surrounding ourselves with palms and other botanical specimens from exotic destinations in our indoor spaces with luxury, rest and relaxation. Be it Victorian glasshouses in our public parks, or domestic conservatories and sun rooms, I am sure the pointed leaves of a mother-in-law's tongue will resonate with many.

Over recent years, these indoor plants have become very much on-trend, with a huge number of hospitality, commercial and retail establishments lined with pots and prints of palms, fruit salad plants, birds of paradise and living green walls.

This brings back fond memories of my time spent teaching into Lincoln University's landscape architecture programme in Singapore. I recall the wonderful integration of plants and built form within this humid city. My senses piqued once again when we recently spent some time visiting the Flower Dome and

the Cloud Forest at the wonderful Gardens by the Bay.

The latter is a mist-filled 8,000m² conservatory filled with orchids, ferns, vines, mosses, bromeliads and many more species from the moist tropical montane regions of our world. The centrepiece of the dome is the world's tallest indoor waterfall with which you can engage as you traverse the suspended walkways. This certainly challenges the original concept of the Victorian glasshouse.

A number of years ago we thought a living green wall would be the perfect lift for our studio. I'd seen a number of green walls – the one in 'The Gauge', a building in Melbourne with a 6 Star Green Star Office rating, was most memorable with its bold display of epiphytes, lithophytes and hemi-epiphytes growing from mostly expanded foam packaging waste originally destined for landfill. It is hard to resist a beautiful walking iris, the aptly named lipstick plant or even the flamingo flower.

Of course, our desire was to pack our internal green wall with fern, moss and groundcover species native to Aotearoa. However, our dream was derailed once we delved into the cost! Undeterred, we reconsidered our options, and floating above our studio space we now have 21 white pots spilling over with *Syngonium podophyllum*.

Unlike a lot of potted plants I try to

keep alive, the *Syngonium* has thrived despite my lack of attention. Luckily, others within our office make sure the pot mix is kept moist. The green leaves tumble down and the trailing vines entwine to provide us with an ethereal green ceiling that only drops water on the odd occasion.

Every other new building design I see starts off with an internal green wall until the sickle of value engineering cuts a swathe through the project budget. But is it just a fad that will be surpassed by the next 'in thing', or could this inside greening be here to stay – when budgets allow?

Without an in-depth analysis of the benefits of the potted *Syngonium* in our studio, I happily defer to current research that shows that there are a good many things indoor plants contribute to our lives.

Our lives are becoming busier, immersed in technology, and our cities increasingly intensified. Perhaps our biophilic orientation (an ingrained desire to immerse ourselves in nature and bring more of the landscape indoors) is an attempt to 'disconnect' and reconnect with nature to improve our wellbeing.

03 366 3268 | roughandmilne.co.nz

A man with grey hair, smiling broadly, wearing a dark blue pinstriped suit jacket, a white shirt, and a red tie with white diagonal stripes. He is standing in a social setting with other people in the background, including a woman with blonde hair and a man in a suit. The background is slightly blurred.

We try harder.

“We’ll go to
great lengths
to sell your
home for
more, in less
time and with
lower fees.”

0800 000 525
mikepero.com

Mike Pero
REAL ESTATE

Powerful performance

MERCEDES' MOST EXTREME GLC MODEL HAS FINALLY ARRIVED. POWERFUL AND QUICK AS LIGHTNING, THIS LUXURY FAMILY VEHICLE IS THE NEWEST ADDITION TO ARMSTRONG PRESTIGE.

The newest Mercedes Benz SUV may be built for speed, but the five-door wagon is also ideal for families.

The Mercedes-AMG GLC 63 S 4MATIC+ is a high-spec, luxury SUV designed with muscular shoulders for a highly masculine form, which is guaranteed to set pulses racing.

Its exterior is characterised by expressive aesthetics. Distinctive taillights and the AMG rear apron with diffuser and diffuser board in black sets this SUV apart. The AMG sports exhaust system provides yet another visual accent at the rear with two chrome-plated twin tailpipe trim elements. And,

underpinning its powerful presence, the AMG's roaring V8 engine offers optimal performance.

Inspired by motorsport, the AMG interior offers luxury and comfort with the option of durable hard-shell or plush sports front seats with Nappa leather trim and three-zone climate-control, while the 13 speaker Burmester sound system and digital TV tuner provides the ultimate in mobile entertainment.

Visit the brand new AMG Performance Centre, which opened on 28 June, to take this remarkable SUV for a test drive.

03 343 2468 | armstrongprestige.com

SPECIFICATIONS

Mercedes-AMG GLC 63 S



Key Features

- + AMG 21" 5 twin-spoke alloy wheels
- + AMG Performance seats
- + AMG Nappa leather upholstery
- + AMG Performance exhaust
- + AMG Panamericana grille

Technical Data

- + 3,982cc, V8, 375kW, 700Nm
- + Direct-injection, bi-turbo
- + AMG SPEEDSHIFT MCT 9-Speed
- + ECO start/stop
- + 4MATIC all-wheel drive variable

Fuel Data

- + TBA L / 100km combined cycle ADR 81/02
- + TBA g CO2 p/km
- + 98 RON



TEA TOWEL

While drying the dishes is hardly the most exciting thing to do, the humble tea towel happens to be one of the easiest pre-made items for printing on. Tea towels are the perfect canvas for first-time printers: they're flat and often blank and are always made from a natural fibre.

You will need

- + screen printing kit
- + iron
- + ink in 1 colour
- + 2 blank cotton or linen tea towels

Handy hints

- + We find natural fibres work best for screen printing. We recommend that you start out printing on cotton and then build up to linen once you become more confident.
- + For best results, iron your fabric before printing.
- + We recommend you print two tea towels. It's rare that you'll get the first print right, so it's good to have a backup.

Instructions

Draw your design, transfer it onto stencil paper, then cut your stencil. The design for this project was inspired by our love of indoor plants.

Iron your tea towels and lay them out flat on the work surface. Prepare the screen and attach the stencil to the front. Get your squeegee and ink ready.

Place the screen on top of the first tea towel. Use a spatula to spread a generous amount of ink above your design. Start printing with one flood stroke and then apply pressure during your three hard pulls. Carefully lift up the screen from the fabric.

Place the screen onto other areas of the tea towel, positioning the screen in different directions each time, and repeat the printing process. Do the same with the second tea towel. Once you're done, peel off the stencil and wash it, then wash the screen. Dry the prints completely using a hair dryer. Heat set your tea towels with an iron.

For further instructions on what to put in your screen print kit, how to make your stencil, and all other essentials to start creating print magic, visit abodemagazine.co.nz.



This is an excerpt from *Print Play: Screen printing inspiration for your life and home*, by Jessie Wright and Lara Davies, published by Hardie Grant Books and available from all good book stores.

Passion for print

SCREEN PRINTING DESIGNERS AND TEACHERS, JESSIE WRIGHT AND LARA DAVIES OPEN UP A WORLD OF POSSIBILITIES WITH PATTERNS IN THEIR NEW BOOK, *PRINT PLAY*.

BUILDING A NEW HOME IN THE COUNTRY?

Choose the most biologically advanced sewage treatment system in New Zealand!



PEACE OF MIND

+



ECO FRIENDLY

+



ADVANCED TECHNOLOGY



0800 287 846

austinbluewater.co.nz

PLACES WE LOVE

Step inside a world of wonder with our place to visit this month



THE HEADS

OMAPERE, NORTHLAND

Situated at the head of the breathtaking Hokianga Harbour lies Omapere, and nestled on the south bank is The Heads. Aptly named, the seaside resort is an idyllic spot to rest, unwind and enjoy the local manaakitanga (hospitality).

A stylish retreat with modern features, spacious private courtyard and hot tub, The Heads evokes a warm, friendly atmosphere: arriving feels like coming home.

The Heads is the perfect place from



COMPETITION!

We have two nights in a villa at The Heads for two people, with breakfast plus a \$100 voucher at the restaurant, to give away. Prize also includes an unforgettable Footprints Waipoua Twilight Encounter tour. Follow our Facebook page (facebook.com/abodemagazineNZ) for further details on how to enter.

which to explore the untouched beauty of the Hokianga Harbour. Known as the birthplace of the nation, the area is famous for its magnificent kauri trees, golden beaches, rich history and vast array of scenic walking tracks. You will be enthralled by the depth of history and culture this unique region has to offer.

Guests at the seaside resort can enjoy luxury and comfort, inspired by the raw, untouched beauty of nature around them. The spacious open-plan suites are light, bright and filled with natural timber finishes.

Nothing happens by mistake at The Heads. From the architecture to the art, every detail of the surroundings is carefully chosen to connect you with the land and its people.

More than just four walls, the building is shaped to resemble a whareniui, a Maori communal house, which is a place of manaakitanga, of warmth, generosity, respect and kindness. With nature at its core, the villas' luxurious bathrooms are inspired by Hokianga's awa (river) and the mighty moana (sea), with gorgeous images of the whenua (landscape) –

captured by a local photographer – lining the walls.

Whilst there you must tread the earth where our ancestors once roamed and explore the scenic walkways through the Waipoua Forest, which is home to the mighty Tāne Mahuta, believed to be more than 2500 years old.

Don't underestimate the power of a personalised twilight tour with Footprints Waipoua, which promises to be one of the most magical and memorable evenings you'll ever experience.

theheads.co.nz
footprintswaipoua.co.nz



Roasted ratatouille with orzo

INSPIRED BY THE MOVIE, *RATATOUILLE*, *DOWNTIME*
AUTHOR NADINE LEVY REDZEPI HAS REVISITED THIS
CLASSIC DISH AND GIVEN IT HER PERSONAL TOUCH.

Serves 6-8

INGREDIENTS

2 narrow aubergines, about 680 g
2 large courgettes, about 450 g
6 beefsteak tomatoes
45 g salted butter, at room temperature
60 ml extra-virgin olive oil
4 garlic cloves
8 fresh thyme sprigs
3 tsp fresh basil leaves
450 g cherry tomatoes
fine sea salt
450 g orzo

METHOD

1. Preheat the oven to 190°C (170°C fan).
2. Trim the aubergines and courgettes and slice off the stem ends of the beefsteak tomatoes. Cut the vegetables into thin slices, about 6 mm for the aubergines and courgettes, and a bit thicker for the tomatoes. Keep the vegetables separate.
3. Butter a 23 to 25 cm round shallow casserole dish or a frying pan with a lid with 15 g of the butter. Drizzle in 2 tsps of the oil. Crush the garlic with the flat side of your knife, then peel the garlic (discard the papery skins) and add it to the casserole along with the thyme sprigs and basil leaves. Halve the cherry tomatoes and gently squeeze them over the baking dish to release their juices and seeds into the pan. Reserve the cherry tomatoes for another use (see below). Using your fingertip, poke out the seed clusters from the sliced beefsteak tomatoes and add them to the baking dish.
4. Alternate the tomato, aubergine and courgette slices in the baking dish in rows, filling the dish all the way to the centre. Drizzle with the remaining 2 tsps oil and season with salt.
5. Bake uncovered for 20 minutes. Cover the casserole and continue baking until the aubergine is a few shades darker, like a strong café latte, and the courgette is an almost translucent, pale and glossy yellowish colour, 20 to 30 minutes more.
6. While the ratatouille is baking, bring a large pan of water to a boil over high heat for the orzo. When the water boils, add a tablespoon or so of salt. Stir in the pasta and cook, stirring every 2 minutes to ensure that it does not stick to the bottom, according to the packet directions until al dente, about 8 minutes, depending on the brand.
7. To warm the pasta serving bowl, place it in the sink and set a colander inside. Drain the pasta in the colander and return it to the cooking pan, letting the hot pasta water stand in the serving bowl for about 30 seconds to warm it. Empty and dry the serving bowl and add the pasta. Stir in the remaining 30 g of butter.
8. To serve, bring the ratatouille to the table in its baking dish. Spoon the orzo into bowls and top each serving with the ratatouille and some of its juices.



This edited excerpt is from *Downtime: Deliciousness at Home* by Nadine Levy Redzepi, photography by Ditte Isager, published by Ebury Press, and available in all good book stores.



Fondue party

CREATING FAULTLESS FONDUE AT HOME HAS NEVER BEEN EASIER WITH STELLAR PRODUCTS AND TIPS FROM TOTAL FOOD EQUIPMENT.

Quality cheese or chocolate is paramount when creating the ultimate fondue. And, although a fondue set is a great way to serve and share the experience, it's easier to manage by melting the ingredients first on the stove.

Don't rush the melting process. Whether you're using cheese or chocolate, melt it over a low heat in large blocks, rather than grating it – for a smooth, creamy texture without lumps.

Mix and match different cheeses. The more you combine, the more interesting the flavour. And, don't be afraid to add in some old cheeses that have been sitting around, as it's a great way to get rid of scraps while adding the flavour of cheeses that have matured and become sharper with age.

Add interest to cheeses with herbs and spices. Throw in a sprig of fresh thyme, grated raw garlic or a pinch of cayenne, paprika, nutmeg or white pepper. Introduce sautéed leeks, sweet pimiento, smoked salt or chives to create a richer

flavour. And, for chocolate, add in liqueurs or flavoured syrups like hazelnut or vanilla bean.

Experiment with various types of breads. Think outside the box and go beyond the plain baguette. Try loaves of fruit and nut breads from your local artisan bakery. Walnut bread is especially yummy and works equally well with cheese as with chocolate.

Make it easy on your guests by chopping up morsels into bite-sized chunks that can be eaten in one or two mouthfuls. Marshmallows and tiny cookies make great pairings with chocolate, and fruit works well for both. A great tip to prevent fruit browning is to brush with lemon juice once chopped.

And, of course, no fondue experience is complete without a great bottle of wine or glass of craft beer. Visit your wine and craft beer merchant for the best pairings with cheese and chocolate.

03 366 6912 | tfe.co.nz



Swissmar Lausanne 11 piece copper fondue set is multi purpose: with a quality ceramic insert that doubles as a boiler, this set caters for meat, cheese and chocolate fondue parties.

THE GOOD LIFE

A life well-lived is a life worth living

READING NOOK



Safari Style Africa

by Annemarie Meintjies & Dook Hardie Grant Books

Fusing high-end design with traditional African craft, you'll find original, courageous and soulful architecture and interiors guaranteed to feed your spirit. Stunning photography captures the wild African beauty in each diverse lodge showcased.



New Nordic Colour

by Antonia Af Petersens & Beth Evans
Ryland Peters & Small

Explore how to play with colour, Nordic style. From moody hues to pretty pastels, combined in unexpected ways, this book offers those who are a little apprehensive about straying away from neutrals a wealth of ideas to guide the way. Build confidence and learn how colour can express who you are while bringing life and depth to your living spaces.

NATURE'S CALLING

Not crazy about nasty chemicals? Neither are we. So, when we stumbled across Santosa's plant-based products for home and body, we knew we were onto something good. Fill your home with the uplifting aroma of lavender and grapefruit, or peppermint and eucalyptus, and rest easy about the planet and your wellbeing.

santosa.co.nz



CUPPA CHA

Returning to the art of living simply, by taking a moment to slow things down, we turned to True North Teas to revisit the ancient teatime ritual. This considered collection of single origin teas – chosen for their distinct flavour and aroma – has been ethically sourced from Sri Lanka especially for the discerning tea drinker. As they say, life's too short for bad tea, so up the ante and brew yourself a refreshing cup. We love the Chamomile Apple Spice as a winter warmer and Organic Island Green (pictured) with a refreshing zest of lime and shredded coconut as a wellbeing pick-me-up.

truenorthteas.com



WIN WITH ABODE!

Desperate for a good night's sleep that energises you for the day ahead? SleepDrops herbal remedies have saved many stressed and sleep deprived people from the brink of exhaustion. Don't believe us? Try them for yourself!

Follow us on Facebook ([facebook.com/abodemagazine](https://www.facebook.com/abodemagazine)) to win one of three SleepDrops Sleep Support System and Daytime Revive packs.



STEPPING OUT

Through a partnership between a merino-mad Kiwi and an American engineer and renewables expert, revolutionary woollen footwear Allbirds was conceived. Allbirds is about creating better things in a better way, and when the result is this stylish, who can argue? With such simple design and supreme comfort, we have become the latest converts. For men, women and tiny tots, Allbirds offers Runners and Loungers made either from New Zealand merino wool or eucalyptus trees. allbirds.co.nz

SWEET DREAMS

We have fallen head over heels for Foxtrot Home's divine bed linen. Made from 100 per cent French flax linen, and stonewashed for extra softness, you can rest assured bedtime will be something you'll look forward to from now on. Warm in winter and cool in summer, have fun mixing and matching different colourways to create your own unique style. Keep your eyes peeled for the newest colour to join the collection in July – a rich ochre that is guaranteed to spice up chilly winter nights. foxtrothome.co.nz



STYLISH CARRY ON

Travelling in style – even if it's just from home to the office – has never looked this chic. Modern, practical, robust and beautifully made with quality materials, this Aussie brand offers a wide range of carry goods for men and women. From work accessories to protect your devices, to backpacks and totes, to purses and wallets, we're particularly smitten with the Slim Work Tote (pictured) that can hold a 15" laptop – the ideal companion for the busy entrepreneur. bellroy.com

BEAUTY BAR



1. Ashley & Co Bubbles & Polkadots SootherUp & WashUp; 2. Syrene Aqua Hydrating Masque; 3. MECCA MAX Life Proof Longwear Foundation; 4. Salt by Hendrix Lip Buff; 5. Murad Resurgence Renewing Eye Cream; 6. Erdem for NARS Strange Flowers Collection; 7. bareMinerals One Fine Line Eyeliner Straight Spice; 8. Kester Black Paris Texas Nail Polish; 9. Slip Silk Eye Mask.

TURKISH DELIGHTS

From bathroom to beach, these super-soft 100 per cent cotton Turkish towels and throws are fabulously versatile. For bath-time or a post workout shower, these wonderfully compact, yet incredibly absorbent and quick-drying towels can also double as wraps in winter or sarongs in summer. Stylish and incredibly practical, Izzy and Jean introduces the new Stonewashed Collection in a choice of Ash (pictured), Charcoal, Pistachio or Watermelon. izzyandjean.co.nz



SHOP WINDOW

To feature your business here call Rebecca Duncan on 021 711 813 or email: rebecca@27publishers.co.nz



BALLANTYNES

ballantynes.co.nz

Ballantynes has brought their homewares department home to their central city store. Cookware and dining has returned to the ground floor, while home and living, bed and bath, and French Country collections can now be found on the lower ground floor alongside New Zealand giftware and stationery. A hub of design inspiration, you'll find the hottest trends and highest quality products for the home.



ILAM FLORIST

ilamflorist.co.nz

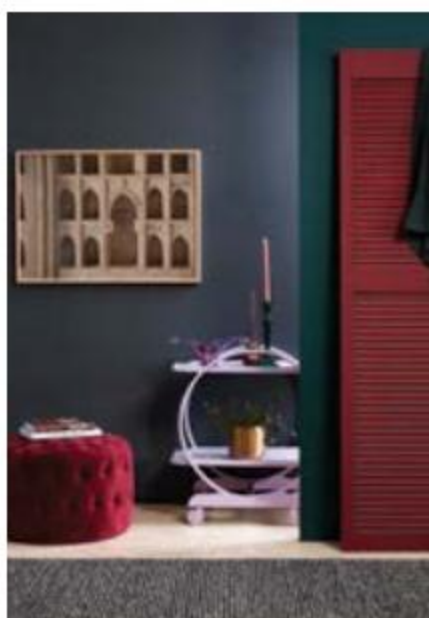
With beautiful blooms to suit every momentous life occasion, Ilam Florist caters to your every floral whim. When words just aren't enough, Ilam Florist's team of passionate floral stylists can create stunning arrangements bursting with fresh, seasonal flowers. Offering same-day delivery within Christchurch, you'll also find the perfect gift, greeting card and homeware accents at 203 Waimairi Road, or simply order online.



THE FABRIC OF SOCIETY

thefabricofsociety.co.nz

Formerly known as Femme de Brocante, The Fabric of Society has extended their Rangiora showroom to showcase their wide selection of fabric, paint, homewares and occasional furniture, both old and new. A meeting place for those seeking décor inspiration, their textile collection encompasses an eclectic mix of styles, colours and patterns in beautiful natural fibres to suit every home.



RESENE

resene.co.nz/colorshops

Embarking on a home decorating project but experiencing a colour conundrum? Resene's experienced colour experts are on-hand to help you successfully select colour combinations and wallpapers that reflect your personality in your home. Book a free in-store consultation, or make an appointment with a Resene colour expert to visit you at home – where they can help you with your Resene paint, wood stain and colour choices inside and out.



CORSO MERIVALE

corsomerivale.nz

Merivale's iconic boutique for quality designer homewares exudes luxury and enduring style. With a distinctly European influence, Corso's carefully curated selection of ceramics, glassware, furniture, clothing and jewellery makes them a top design destination amongst the style-savvy of Christchurch. For exquisite lifestyle pieces that make a life well-lived well worth living, visit Corso Merivale today.



FABRIC HOUSE

fabriehouse.co.nz

Revitalise windows with new drapes and give tired furniture a new lease of life with drapery and upholstery fabric that includes oilcloth, sheers and a wide range of linens at wholesale prices. In addition to their quality European textiles, they also offer a beautiful selection of cushions and throws. Visit their new store at The Tannery to refresh your interior decor.



COCO GIFTS

cocogifts.co.nz

Offering a gorgeous selection of global homewares from the likes of Citta Design, CC Interiors, French Country, Le Forge, Maytime and OneWorld Collection, Coco Gifts has the perfect finishing touches to transform your house into a home. Delivering the highest level of customer service, the team enjoys sourcing extra special gifts for weddings and decor accents to complete your interior spaces.



WHITE ROOM INTERIORS

whiteroominteriors.co.nz

Offering a full design service, White Room Interiors draws on an exquisite collection of European wallpapers and textiles, together with a range of furniture and homewares to complement your interior spaces. Exclusive stockists in Christchurch of Cultiver's luxurious bed linen range, White Room Interiors also stocks heavenly scented candles and diffusers to relax or invigorate.



BRYMAC TILES

brymactiles.co.nz

In operation for over 40 years, Brymac Tiles has a wealth of experience and specialist knowledge to draw on. Offering an extensive range of luxury European tiles made from long-lasting materials, at the best prices, Brymac Tiles provides a professional installation service that guarantees quality workmanship every time. Visit their showroom at 42 Durham Street for all your interior and exterior tiling solutions.



THE CLEVER DESIGN STORE

thecleverdesignstore.com

Layer is a new collection of 3D printed pendants by KAMP.studio. Designed in New Zealand and digitally crafted in New York, they are available in black or white, and in six unique silhouettes, with a choice of precious metal hanger details. Visit The Clever Design Store for their inspired selection of beautifully crafted furniture, lighting and homewares designed to complement the modern home.



PAPER PLANE

paperplanestore.com

Design, curation and collaboration define Paper Plane. Situated in the creative mecca that is Mount Maunganui, their comprehensive online store offers a unique home and lifestyle collection. From New Zealand-made contemporary furniture and handcrafted ceramics, to European utilitarian homewares, Paper Plane promises to pique your curiosity and satiate your creative consciousness.



TAILORMADE SPACE

tailormadespace.co.nz

For stylish, bespoke interiors, Tailormade Space works with you to create your unique space. With a passion for uncompromising quality, Tailormade Space offers a choice of affordable packages or can customise their services to suit each individual project. Offering creative flair together with innovation and industry knowledge, they work alongside a diverse range of suppliers and craftspeople to deliver exceptional spaces.



ARTISAN

artisancollective.co.nz

In an age of online shopping, carpet is one product that demands to be seen and touched. Artisan at Designmade has an extensive collection of the finest New Zealand wool carpets, designed to add warmth, style and comfort to your home this winter. Where quality craftsmanship and skilful carpet installation go hand in hand, the professionals at Artisan also have the experience and knowledge to guide your selection.



BLUM

blum.com

Clever kitchen design calls for the perfect marriage between form and function. Esteemed for its faultless engineering, Blum drawers and pull-outs are especially designed to bear heavy loads, while top quality motion technology enables effortless daily use. Experience the full range of Blum hardware, which includes door hinges and overhead cabinet lift systems, alongside a range of storage solutions in their Woolston showroom.



GM HAIR GALLERY

gmhair.nz

Step inside the newly transformed warehouse that is GM Hair Gallery. With 30 years' experience in the industry, styling hair for the world's biggest fashion shows, Mike and Glynis Hamel create magic for their clients from this stimulating space. For a unique and inspired approach to hair, visit their new location at 300 Cashel Street.



Go with the Flow 

Rheem
RHEEM CONTINUOUS FLOW
GAS HOT WATER

Hot water, for the whole family

Available at Edward Gibbon nationwide
www.edwardgibbon.co.nz

EDWARD GIBBON
PLUMBING, DRAINAGE & BATHROOM SUPPLIES 

Mike Pero's
Motorcycle
Gallery



60+ Classic Japanese bikes from the 70s, 80s & 90s'

1 Hawthornden Road, Avonhead - 6 mins from Chch Airport
Wed-Sun 10am to 5pm - www.motorcyclegallery.co.nz

DIGOUT
SERVICES LTD

Kevin Williams
021 221 2616
www.digoutservices.co.nz
digoutservices@xtra.co.nz



COVERING ALL EXCAVATING
REQUIREMENTS THROUGHOUT
CHRISTCHURCH & NORTH CANTERBURY




Greytone
painters + decorators




- Interior/Exterior
- Residential
- Light Commercial
- Painting
- Paper Hanging
- Airless Spraying

greytone.painters@gmail.com 021 354 803

YOUR ZONE TO HANG OUT & YAK STARTS HERE..

On Cue is South Island's only pool and snooker store manufacturing tables right here in our Christchurch workshop. Each table is hand crafted with quality timbers and componentry engineered for precision playing.

VISIT OUR NEW SHOWROOM TODAY

oncue.
POOL SNOOKER DARTS

46 MONTREAL ST, SYDENHAM, CHRISTCHURCH P: 03 384 3256 WWW.ONCUE.NET.NZ

Create your perfect life space



We all have different ideas about the perfect home. Nulook has the windows and doors that are right for yours.

That's because we offer you a choice of four different suites – each with its own distinctive style and benefits. Let's talk about creating a space that suits the way you live.

Call now for a free quote.
0508 800 755
info@nulook.co.nz
www.nulook.co.nz

SovereignSeries™

All SEASONS™

4i ARCHITECTURAL™



nulook
windows & doors



Image: Murphy Beds / murphybeds.com

blend into the background when they're not in use, giving inhabitants the freedom to use the room more often, either as a second living room, home office, library or meditation room.

Another room that's getting much more mileage these days is the garage. Often the garage is used more as a games room, store room, laundry, an extra bedroom or even yoga studio, than it is for parking cars. And all it takes is lining and insulating the space, installing adequate lighting and, in some cases, creating external access.

Rather than making our homes bigger, consider how to make them work harder to get greater flexibility and economy of space and dollars.

03 384 7879 | young.co.nz

The spare room

ABODE'S ARCHITECTURAL EXPERT GREG YOUNG SAYS, WITH CONSIDERED DESIGN, MAKING THE MOST OF ALL AVAILABLE SPACE IS EASY.



GREG YOUNG

Architect and Managing Director of Young Architects

In 1974 the average house size was 110 square metres, and by 2016 the average size had grown to 182 square metres. But, rather than making houses bigger, we can focus instead on making them more efficient, and, in the case of the spare room, much more flexible.

Games rooms, media rooms, second living rooms, libraries, music studios, home offices, guest bedrooms, craft rooms and man caves are all spaces that aren't essential, but are nice to have at home. By utilising one room for different functions and creating flexible spaces, we are able to open the door to greater flexibility within a smaller footprint.

With many homeowners wanting a guest room for visiting friends and family, it's important to consider how often you'll be expecting house guests. If the answer is 'a week at Christmas, every other year', there are plenty of clever ways to accommodate

occasional guests while making the most of the space for the inhabitants all year round.

A guest bedroom can easily double as a rumpus room for the rest of the year and is easily achieved by integrating fold-down beds. Custom-made slat beds can be seamlessly integrated into built-in joinery so they



Image: Murphy Beds / murphybeds.com



We Know Girls

A quality education is a gift for life.



Artisan Finishes: Rockcote Velvetina

Inspired by nature

Bespoke interior finishes created by ROCKCOTE Artisan plasterers alongside our wide array of finishing plasters will leave you inspired. Hand applied with creativity and skill, every finish is bespoke. Our range of ROCKCOTE Artisan interior plasters can be coloured from a wide range of genuine Resene colours to complement your other interior surfaces.

The increasing awareness of sustainable building techniques, alongside the desire to make our buildings healthier, the benefits of using natural plaster finishes are being rediscovered. The ROCKCOTE range draws inspiration from nature to provide beautiful, natural interior finishes to create unique, durable and appealing surfaces that benefit the building occupants and the environment.

Our interior range includes; Clay Decor, Marrakesh tadelakdt - lime, Otsumigaki - lime/clay, Velvetina, & Ventian polished lime.

Visit reseneconstruction.co.nz or call us to discuss your next project.